

DESCRIPTION

The MAA Series LED direct/indirect over-bed luminaire is a stylish wall-mounted fixture for healthcare and patient room applications. Available in 2, 3, and 4 foot lengths with customizable uplight and downlight configurations or a direct-only option with closed-top design to prevent unwanted uplight. Featuring curved wedge-shaped endcaps in brushed nickel, white, or white marble finishes and a molded white one-piece acrylic lens.

SPECIFICATIONS

Construction:

- Polycarbonate enclosure with wedge shaped endcaps
- Endcaps available in Brushed, White and White Marble
- Brushed Nickel/White or White Finish with molded one piece acrylic lens

Optics/LEDs:

- One piece white acrylic diffuser for uniform LED diffusion
- Lumen packages from 1,000 to 7,000 lumens
- Available as downlight or up/downlight
- 3000K, 3500K, 4000K, 5000K CCT
- CRI ≥ 82
- L70 > 100,000 hours

Electrical:

- Universal 120-277VAC, 50/60Hz
- 0-10V Dimming driver
- Power Factor ≥ 0.90

Installation:

- Surface wall mount

Options:

- Integral Battery Backup provides 7.5-watt emergency for continued illumination during power loss (Option: BB)
- Tamper Resistant Hardware to deter unauthorized removal or tampering (Option: TRH)

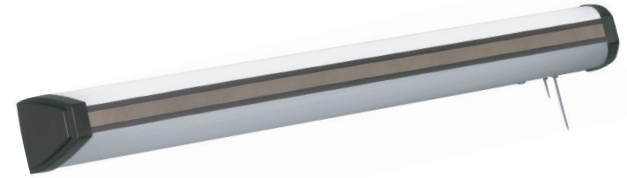
Testing & Compliance:

- cETL Listed
- Buy American Act compliant
- Build America, Buy America Act compliant
- Operating temperatures: -30°C to 50°C (-22°F to 122°F)

Warranty:

- Five Year Warranty (Terms and Conditions Apply)

Model: _____ Date: _____
Accessories: _____
Job Name: _____ Type: _____



APPLICATIONS

- Patient Rooms



Specs at a Glance

Wattage (W)*	6W - 50W
Lumens (lm)	1,000 - 7,000
Efficacy (LPW)	Up to 152
CCT (K)	3000K, 3500K, 4000K, 5000K
CRI	≥ 82
Input Voltage	120-277VAC, 50/60Hz
Operating Temp	-30°C to 50°C (-22°F to 122°F)
Certifications	cETL Listed
Warranty	5 Years

* Nominal Wattage, tested at 4000K CCT. See performance table for details.

Note: Environment and application will affect actual performance. Typical values and 25°C (77°F) used for testing. Specifications subject to change without notice.

ORDERING INFORMATION (Example: MAA-2-6-3K-6-3K-VS-1-S2-WH-BN-BB)

Model	Size	Downlight Wattage	Downlight CCT	Uplight Wattage	Uplight CCT	Voltage	Circuits
MAA	2 = 2'	6 = 6 Watts	3K = 3000K	BLANK = None	BLANK = None	VS = 120-277VAC	1 = 1 Circuit
	3 = 3'	14 = 14 Watts	35K = 3500K	6 = 6 Watts	3K = 3000K		2 = 2 Circuit
	4 = 4'	17 = 17 Watts	4K = 4000K	14 = 14 Watts	35K = 3500K		
		20 = 20 Watts	5K = 5000K	17 = 17 Watts	4K = 4000K		
		24 = 24 Watts		20 = 20 Watts	5K = 5000K		
		28 = 28 Watts		24 = 24 Watts			
		35 = 35 Watts		28 = 28 Watts			
		42 = 42 Watts		35 = 35 Watts			
		50 = 50 Watts		42 = 42 Watts			
				50 = 50 Watts			

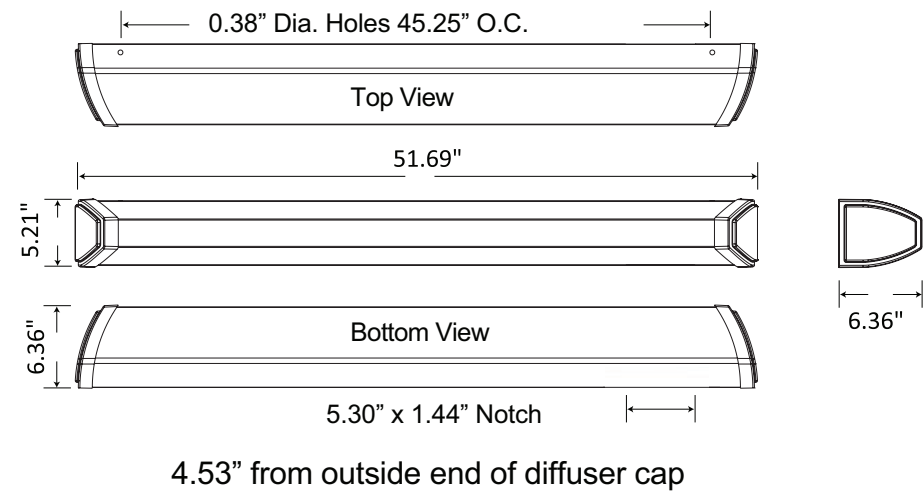
Switching	Finish	Endcap Finish	Driver	Options (Factory Installed)
BLANK = None	BNWH = Nickel/ White Center	BN = Brushed Nickel	BLANK = 0-10V Dimming Driver	BB = 7.5 Watt Battery Backup
S2 = 2 Position Pull Chain	WH = White	WH = White		TRH = Tamper Resistant Hardware
S3 = 3 Position Pull Chain		WM = White Marble		

PERFORMANCE DATA

Model	Wattage	CCT	Lumens*	LPW	CRI
MAA-X-6-3K-VS	6.9W	3000	940	136	≥82
MAA-X-6-35K-VS	6.9W	3500	970	141	≥82
MAA-X-6-4K-VS	6.9W	4000	1000	145	≥82
MAA-X-6-5K-VS	6.9W	5000	1030	149	≥82
MAA-X-14-3K-VS	13.9W	3000	1880	135	≥82
MAA-X-14-35K-VS	13.9W	3500	1940	140	≥82
MAA-X-14-4K-VS	13.9W	4000	2000	144	≥82
MAA-X-14-5K-VS	13.9W	5000	2060	148	≥82
MAA-X-17-3K-VS	16.9W	3000	2350	139	≥82
MAA-X-17-35K-VS	16.9W	3500	2425	143	≥82
MAA-X-17-4K-VS	16.9W	4000	2500	148	≥82
MAA-X-17-5K-VS	16.9W	5000	2575	152	≥82
MAA-X-20-3K-VS	20.8W	3000	2820	136	≥82
MAA-X-20-35K-VS	20.8W	3500	2910	140	≥82
MAA-X-20-4K-VS	20.8W	4000	3000	144	≥82
MAA-X-20-5K-VS	20.8W	5000	3090	149	≥82
MAA-X-24-3K-VS	24.1W	3000	3290	137	≥82
MAA-X-24-35K-VS	24.1W	3500	3395	141	≥82
MAA-X-24-4K-VS	24.1W	4000	3500	145	≥82
MAA-X-24-5K-VS	24.1W	5000	3605	150	≥82
MAA-X-28-3K-VS	27.7W	3000	3760	136	≥82
MAA-X-28-35K-VS	27.7W	3500	3880	140	≥82
MAA-X-28-4K-VS	27.7W	4000	4000	144	≥82
MAA-X-28-5K-VS	27.7W	5000	4120	149	≥82
MAA-X-35-3K-VS	34.7W	3000	4700	135	≥82
MAA-X-35-35K-VS	34.7W	3500	4850	140	≥82
MAA-X-35-4K-VS	34.7W	4000	5000	144	≥82
MAA-X-35-5K-VS	34.7W	5000	5150	148	≥82
MAA-X-42-3K-VS	41.6W	3000	5640	136	≥82
MAA-X-42-35K-VS	41.6W	3500	5820	140	≥82
MAA-X-42-4K-VS	41.6W	4000	6000	144	≥82
MAA-X-42-5K-VS	41.6W	5000	6180	149	≥82
MAA-X-50-3K-VS	50.1W	3000	6580	131	≥82
MAA-X-50-35K-VS	50.1W	3500	6790	136	≥82
MAA-X-50-4K-VS	50.1W	4000	7000	140	≥82
MAA-X-50-5K-VS	50.1W	5000	7210	144	≥82

*For uplight reference the same corresponding downlight lumens. For example an MAA-4-14-4K-6-4K-VS-1-WH-WH would have 2,000 lumens of downlight and 1,000 lumens of uplight

DIMENSIONS



ENDCAP FINISHES



FINISHES

