

**DESCRIPTION**

The BAC Series behavioral health LED center basket is purpose-built for patient safety in psychiatric wards, behavioral health facilities, mental health units, hospitals, and any patient-care environment requiring anti-ligature, tamper-resistant, glare-free therapeutic lighting. Available in 1' x 4', 2' x 2', and 2' x 4' sizes with static CCT between 2700K-5000K and lumen packages from 4,000 to 25,000 lumens, the BAC delivers soft, diffused illumination through a frosted acrylic diffuser.

**SPECIFICATIONS**

**Construction:**

- Cold rolled steel, stainless steel or aluminum enclosure
- Die-formed, TIG and spot welded
- Durable TGIC polyester powder coating featuring a 5-stage pre-treatment for superior adhesion and corrosion protection
- Available in Brushed, Polished, White or Antimicrobial White Paint that inhibits growth of bacteria on the fixture surface
- Tested to 1,000 hours salt spray with 92% reflectance
- Ligature-resistant design
- Tamper resistant T25 Torx hardware
- Recessed design fits most standard T-bar grid ceilings

**Optics/LEDs:**

- Frosted Acrylic diffused lens for uniform LED diffusion
- Outer polycarbonate or glass lens
- Lumen packages from 4,000 to 25,000 lumens
- 2700K, 3000K, 3500K, 4000K, 5000K CCT
- CRI ≥ 82, optional 90 CRI (Option: 90)
- Efficacy up to 165 lumens per watt
- L70 > 100,000 hours

**Electrical:**

- Universal 120/277VAC, 50/60Hz
- 0-10V Dimming driver
- Power Factor ≥ 0.90
- 347-480VAC option (Option: HVS)

**Installation:**

- Universal mounting allows for both recessed flanged and recessed grid mounting
- Easy installation with adjustable 90° swing arm system standard, with optional grid clamp (Option: GC)

**Options:**

- Integral Battery Backup provides 14 watts of emergency illumination during power loss (Option: BB)
- Tamper-resistant Allen head screws with center pin for enhanced security over standard Torx with center pin. (Option: AH)
- LED Night Light offers low-level lighting without full illumination (Option: LN)
- High color-rendering LEDs with ≥90 CRI for improved color accuracy (Option: 90)
- IP65-rated sealed construction suitable for Wet Locations and high-pressure wash-down. (Option: WL)
- Grid clamp for additional securement in T-bar grid ceiling installations. (Option: GC)

**Testing & Compliance:**

- cETL Listed for Damp Locations
- Optional Wet Location under covered ceilings (IP65) (Option: WL)
- Buy American Act compliant (BAA)
- Build America, Buy America Act compliant (BABA)
- Operating temperatures: -30°C to 50°C (-22°F to 122°F)

**Warranty:**

- Five Year Warranty (Terms and Conditions Apply)

Model: \_\_\_\_\_ Date: \_\_\_\_\_  
Accessories: \_\_\_\_\_  
Job Name: \_\_\_\_\_ Type: \_\_\_\_\_



**APPLICATIONS**

- Behavioral Health



Specs at a Glance			
Model	BAC-11	BAC-22	BAC-24
Wattage (W)*	25W - 75W	25W - 93.8W	25W- 156.3W
Lumens (lm)	4,000 - 12,000	4,000 - 15,000	4,000 - 25,000
Efficacy (LPW)	Up to 165		
CCT (K)	2700K,3000K,3500K,4000K,5000K		
CRI	≥82, Optional 90		
Input Voltage	120/277VAC, 50/60Hz		
Operating Temp	-30°C to 50°C (-22°F to 122°F)		
Certifications	cETL Listed for Damp, Optional Wet Location (IP65)		
Warranty	5 Years		

\* Nominal Wattage, tested at 4000K CCT. See performance table for details.

Note: Environment and application will affect actual performance. Typical values and 25°C (77°F) used for testing. Specifications subject to change without notice.

ORDERING INFORMATION (Example: BAC-14-25-R-VS-27K-A-16-I-1-F-WH-BB)

Model	Size	Wattage	Lens Type/Diffuser	Voltage	CCT	Housing/Door Material
BAC	14" = 1' x 4'	25 = 25 Watt	R = Round Frosted Acrylic	VS = 120-277VAC	27K = 2700K	A <sup>3</sup> = Aluminum
	22" = 2' x 2'	45 = 45 Watt	S = Square Frosted Acrylic	HVS = 347-480VAC	3K = 3000K	S4 <sup>4</sup> = Stainless Steel 304
	22" = 2' x 4'	70 = 70 Watt			35K = 3500K	S6 <sup>4</sup> = Stainless Steel 316
		75 = 75 Watt			4K = 4000K	C <sup>5</sup> = Cold Roll Steel
		82 = 82 Watt			5K = 5000K	
		95 = 95 Watt				
		100 = 100 Watt				
		125 = 125 Watt				
		155 = 155 Watt				

Gauge Size	Door Type	Outer Lens	Mounting	Finish	Driver
14 = 14 Gauge	I = Inset Door	P1 = .187 Clear Polycarbonate	F = Flange	AM = Antimicrobial White	BLANK = 0-10V 1% Dimming Driver
16 = 16 Gauge	O = Overlap Door	P2 = .250 Clear Polycarbonate	G = Grid	B = Brushed	
18 = 18 Gauge		P3 = .375 Clear Polycarbonate		P = Polished	
				WH = White	

Options (Factory Installed)	Notes
BB = 14 Watt Battery Backup	<sup>1</sup> Only available in 25, 45, 70, and 75 Watt
AH = Allenhead Screws w/ Center Pin	<sup>2</sup> Only available in 25, 45, 70, 75, 82, and 95 Watt
LNXX <sup>6</sup> = LED Night Light	<sup>3</sup> Only available in 16 Gauge with White Finish
90 = 90 CRI	<sup>4</sup> Only available in 18 Gauge
WL = Wet Location (IP65)	<sup>5</sup> Only available in White Finish
GC = Grid Clamp	<sup>6</sup> XX Specify CCT

PERFORMANCE DATA

Model	Wattage	CCT	Lumens	LPW	CRI
BAC-XX-25	25W	2700K	3640	146	≥82
BAC-XX-25	25W	3000K	3760	150	≥82
BAC-XX-25	25W	3500K	3880	155	≥82
BAC-XX-25	25W	4000K	4000	160	≥82
BAC-XX-25	25W	5000K	4120	165	≥82
BAC-XX-45	43.8W	2700K	6370	145	≥82
BAC-XX-45	43.8W	3000K	6580	150	≥82
BAC-XX-45	43.8W	3500K	6790	155	≥82
BAC-XX-45	43.8W	4000K	7000	160	≥82
BAC-XX-45	43.8W	5000K	7210	165	≥82
BAC-XX-70	68.8W	2700K	10010	145	≥82
BAC-XX-70	68.8W	3000K	10340	150	≥82
BAC-XX-70	68.8W	3500K	10670	155	≥82
BAC-XX-70	68.8W	4000K	11000	160	≥82
BAC-XX-70	68.8W	5000K	11330	165	≥82
BAC-XX-75	75W	2700K	10920	146	≥82
BAC-XX-75	75W	3000K	11280	150	≥82
BAC-XX-75	75W	3500K	11640	155	≥82
BAC-XX-75	75W	4000K	12000	160	≥82
BAC-XX-75	75W	5000K	12360	165	≥82

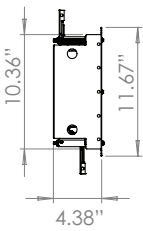
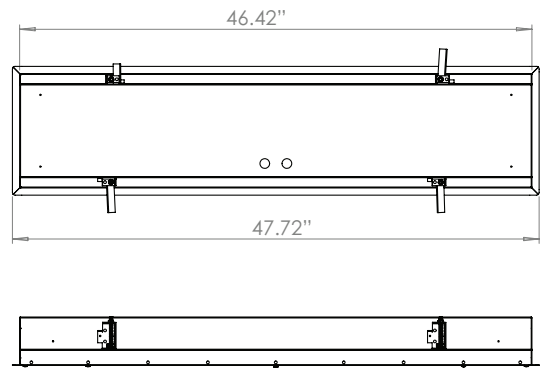
**PERFORMANCE DATA** (continued)

Model	Wattage	CCT	Lumens	LPW	CRI
BAC-XX-82	81.25W	2700K	11830	146	≥82
BAC-XX-82	81.25W	3000K	12220	150	≥82
BAC-XX-82	81.25W	3500K	12610	155	≥82
BAC-XX-82	81.25W	4000K	13000	160	≥82
BAC-XX-82	81.25W	5000K	13390	165	≥82
BAC-XX-95	93.8W	2700K	13650	146	≥82
BAC-XX-95	93.8W	3000K	14100	150	≥82
BAC-XX-95	93.8W	3500K	14550	155	≥82
BAC-XX-95	93.8W	4000K	15000	160	≥82
BAC-XX-95	93.8W	5000K	15450	165	≥82
BAC-XX-100	100W	2700K	14560	146	≥82
BAC-XX-100	100W	3000K	15040	150	≥82
BAC-XX-100	100W	3500K	15520	155	≥82
BAC-XX-100	100W	4000K	16000	160	≥82
BAC-XX-100	100W	5000K	16480	165	≥82
BAC-XX-125	125W	2700K	18200	146	≥82
BAC-XX-125	125W	3000K	18800	150	≥82
BAC-XX-125	125W	3500K	19400	155	≥82
BAC-XX-125	125W	4000K	20000	160	≥82
BAC-XX-125	125W	5000K	20600	165	≥82
BAC-XX-155	156.3W	2700K	22750	146	≥82
BAC-XX-155	156.3W	3000K	23500	150	≥82
BAC-XX-155	156.3W	3500K	24250	155	≥82
BAC-XX-155	156.3W	4000K	25000	160	≥82
BAC-XX-155	156.3W	5000K	25750	165	≥82

DIMENSIONS

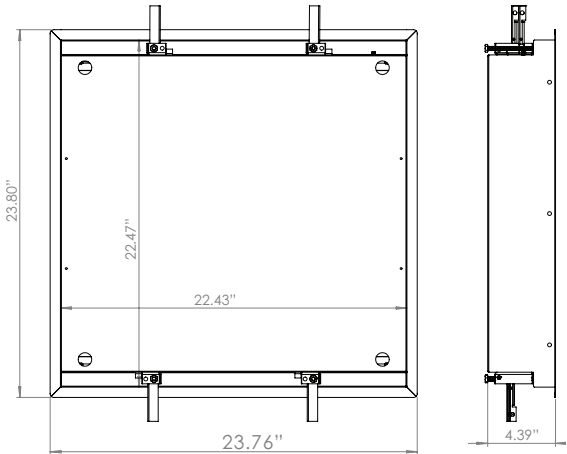
1' x 4'

ROUGH IN SIZE 46 11/16" x 10 5/8"



2' x 2'

ROUGH IN SIZE 22 5/8" x 22 5/8"



2' x 4'

ROUGH IN SIZE 46 5/8" x 22 11/16"

