

DESCRIPTION

Experience unparalleled versatility with the WTA-CP Series. This compact and energy-efficient adjustable LED wallpack offers lumen packages ranging from 1,600 to 11,100 lumens. Adjustable positioning from 0° to 90° allows you to have full control over your lighting and accounts for varying applications. With power selectability and color selectable options between 3000K, 4000K, and 5000K CCT, plus a built-in photocontrol, you can create the perfect ambiance for any environment. Ideal for retail entrances, schools, medical complexes, commercial buildings, and multifamily properties.

SPECIFICATIONS

Construction:

- Die-cast aluminum housing in a powder coated bronze finish with stainless steel hardware
- UV-stabilized polycarbonate lens
- Integral heat sink maximizes heat dissipation for longer LED life
- Hinged back box isolates drivers from LEDs and offers easy access to drivers
- Backbox includes three 1/2" conduit entry points (one on top and two on the sides)
- Built in photocontrol on the top of the unit – simply remove cap to enable

Optics/LEDs:

- Less than 1% uplight to minimize light pollutions (pointing down)
- Type III distribution pointing down (3000K – Type II)
- Up to 11,100 lumens for a variety of applications
- Efficacies up to 155 LPW maximize energy savings and utility rebates
- Switchable between 3000K, 4000K and 5000K CCT
- L70 >100,000 hours
- CRI ≥80

Electrical:

- Class 2 power supply, 120 to 277VAC, 50/60Hz
- 0-10V Dimming driver
- Integral photocontrol standard (remove cap to enable)

Testing & Compliance:

- cULus Listed for Wet Locations
- DesignLights Consortium® (DLC) PREMIUM Qualified
- Operating temperatures: -40°C to 40°C (-40°F to 104°F)

Installation:

- Housing can be adjusted from 0° to 90° for forward throw (10° increments)
- Backbox accommodates conduit entry on both sides and top
- Mounts to a standard 3-1/2" or 4" square electrical J-box

Accessories:

- Wireless Bluetooth PIR Sensor with daylight harvesting capabilities, Black Finish, 12V, 3.5mm AUX port (LE-WTA-BL-12V-KIT)
- Dimming occupancy sensor, PIR, with daylight harvesting capabilities, Black Finish, 12V, 3.5mm AUX port (SC-WTA-BL-12V-KIT)
- Remote for SC-WTA-BL-12V-KIT occupancy sensor (TL-MSSW-REMOTE)

Warranty:

- Five Year Warranty (Terms and Conditions Apply)

Model: _____ Date: _____
 Accessories: _____
 Job Name: _____ Type: _____



Specs at a Glance			
Model	WTA-CP-27	WTA-CP-40	WTA-CP-80
CCT (K)	3000K-4000K-5000K (Switchable)		
Wattage (W)*	11W-16W-21W-27W (Switchable)	16W-24W-32W-40W (Switchable)	32W-48W-64W-80 (Switchable)
Lumens (lm)	1,600 - 3,700	2,300 - 5,500	4,700 - 11,100
Efficacy (LPW)	Up to 155 Lumens Per Watt		
CRI	≥80		
Input Voltage	120-277VAC, 50/60Hz, 0-10V Dimming		
Operating Temp	-40°C to 40°C (-40°F to 104°F)		
Certifications	UL Listed for Wet Locations, DLC PREMIUM		
Warranty	5 Years		

* Nominal Wattage, tested at 5000K CCT. Values at 120/277VAC. See performance table for more detailed lumen information.

Note: Environment and application will affect actual performance. Typical values and 25°C (77°F) used for testing. Specifications subject to change without notice.

ULTIMATE PERFORMANCE. UNPARALLELED VALUE.

Ordering Information (Example: WTA-40-VS-3K-BR-PC)

Model	Description
WTA-27-VS-CP-BR	Adjustable LED Wallpack, Power Switchable 11W/16W/22W/27W, 120-277VAC, 0-10V Dimming, Color Switchable 3000K/4000K/5000K CCT, Bronze Finish
WTA-40-VS-CP-BR	Adjustable LED Wallpack, Power Switchable 16W/24W/32W/40W, 120-277VAC, 0-10V Dimming, Color Switchable 3000K/4000K/5000K CCT, Bronze Finish
WTA-80-VS-CP-BR	Adjustable LED Wallpack, Power Switchable 32W/48W/64W/80W, 120-277VAC, 0-10V Dimming, Color Switchable 3000K/4000K/5000K CCT, Bronze Finish

LifeLogic Accessories¹ (Field Installed)

LE-WTA-BL-12V-KIT = Bluetooth Enabled Dimming Occupancy Sensor, PIR, Black Finish
SC-WTA-BL-12V-KIT = Dimming Occupancy Sensor, PIR, Black Finish
TL-MSSW-REMOTE = Remote for Dimming Sensor Accessory (SC-WTA-BL-12V-KIT)

Notes

¹ Order as a separate line item, shipped in a separate box for installation in the field

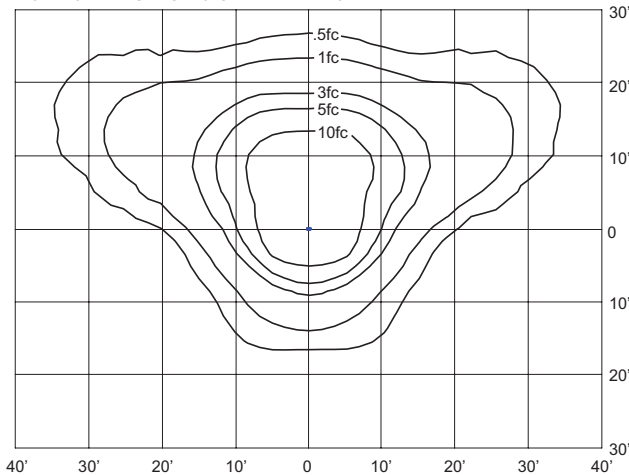
Ordering Information (Example: WTA-40-VS-3K-BR-PC)

Model	Wattage	CCT	Lumen Output (lm)	Efficacy (LPW)
WTA-27-VS-CP-BR (11W, 4000K)	11W	4000K	1700lm	155 lm/W
WTA-27-VS-CP-BR (16W, 4000K)	16W	4000K	2400lm	150 lm/W
WTA-27-VS-CP-BR (22W, 4000K)	22W	4000K	3200lm	145 lm/W
WTA-27-VS-CP-BR (27W, 4000K)	27W	4000K	3800lm	141 lm/W
WTA-40-VS-CP-BR (16W, 4000K)	16W	4000K	2400lm	150 lm/W
WTA-40-VS-CP-BR (24W, 4000K)	24W	4000K	3500lm	147 lm/W
WTA-40-VS-CP-BR (32W, 4000K)	32W	4000K	4600lm	144 lm/W
WTA-40-VS-CP-BR (40W, 4000K)	40W	4000K	5600lm	141 lm/W
WTA-80-VS-CP-BR (32W, 4000K)	32W	4000K	4800lm	151 lm/W
WTA-80-VS-CP-BR (48W, 4000K)	48W	4000K	7100lm	148 lm/W
WTA-80-VS-CP-BR (64W, 4000K)	64W	4000K	9300lm	145 lm/W
WTA-80-VS-CP-BR (80W, 4000K)	80W	4000K	11400lm	142 lm/W

Sample Photometry

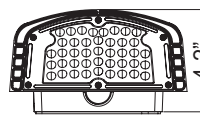
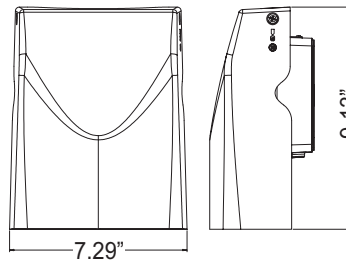
WTA-80-VS-CP (64W, 5000K)

IES: TYPE III Very Short
 MOUNTING HEIGHT: 10'
 TILT: ZERO
 HORIZONTAL SPACING CRITERIA: 2.40

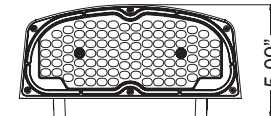
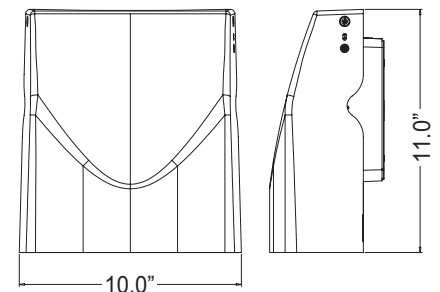


Dimensions

WTA-27
 WTA-40



WTA-80

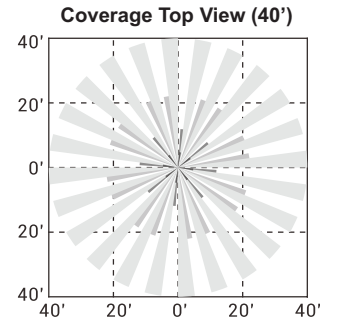
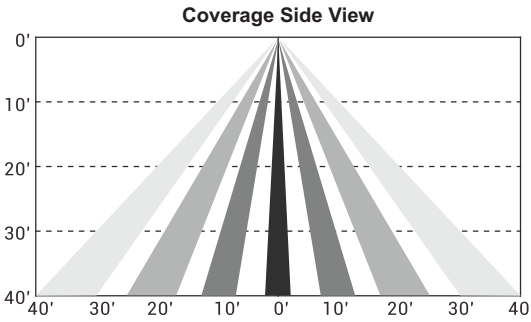


ULTIMATE PERFORMANCE. UNPARALLELED VALUE.

Specifications are subject to change without notice.
 Installation must be performed in accordance with
 Barron Lighting Group installation instructions.

10800445 Rev 1

Sensor Details - Bluetooth Enabled (Accessory LE-WTA-BL-12V-KIT) [Click here for sensor details](#)



SEE APP FOR
SENSOR SETTINGS

For a complete list of LiteLogic compatible products, [click here](#).



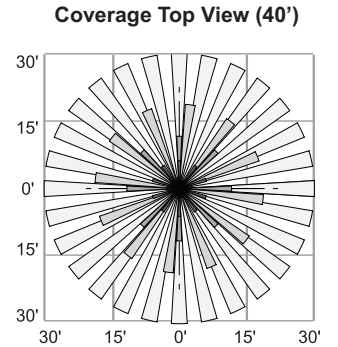
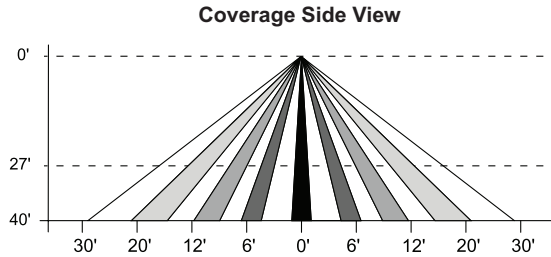
Get it from the
App Store



Get it from
Google Play



Sensor Details (Accessories SC-WTA-BL-12V-KIT and TL-MSSW-REMOTE)



Sensor Settings (TL-MSSW-REMOTE)

DETECTION RADIUS/ANGLE	MAX 60'/360°
MOUNTING HEIGHT	MAX 40'
REMOTE RANGE	MAX 33'
FREQUENCY	5.8 GHz
HIGH MODE	70%, 80%, 90%, 100% (DEFAULT 100%)
SENSITIVITY	20%, 50%, 75%, 100% (DEFAULT 100%)
HOLD TIME	10sec, 1min, 5min, 10min, 15min, 20min, 30min, 60min (DEFAULT 5min)
DAYLIGHT HARVESTING	☀️, (disabled), 10Lux, 30Lux, 50Lux, 100Lux, 150Lux, 200Lux, 300Lux (DEFAULT disabled)
STANDBY DIM SETTING	0, 10%, 20%, 30%, OFF (∞), (DEFAULT 30%)
STANDBY TIME SETTING (TO OFF)	ON (disabled), 1min, 30min, 60min (DEFAULT 30min)



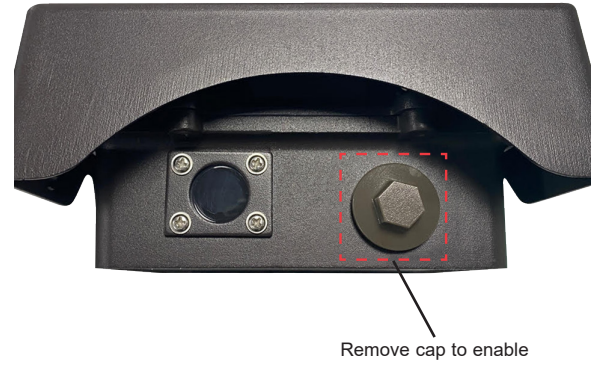
TL-MSSW-REMOTE Accessory
(Sold Separately)

ULTIMATE PERFORMANCE. UNPARALLELED VALUE.

Switch Detail



Photocell Detail



ULTIMATE PERFORMANCE. UNPARALLELED VALUE.