

The VEX-WPC Series is engineered to perform in the most extreme environments. A fully gasketed polycarbonate lens and 5VA housing enable the VEX-WPC to be installed in locations that require Wet Location rated protection.

Model: _____ Date: _____
Accessories: _____
Job Name: _____ Type: _____

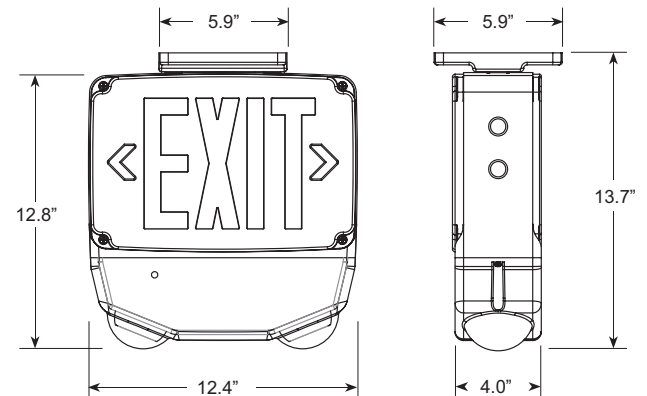
FEATURES & BENEFITS

- Ideal for Wet Location applications in extreme conditions
- UV stabilized, impact and corrosion resistant 5VA plastic enclosure with one-piece, molded, weather-proof gasket
- Adjustable LED lamp heads feature 3.6W (3 LED's x 1.2w) per head - up to 45' on-center spacing
- Remote capable (6V) - up to 7.2W
- UL Listed 90 minute emergency run time, 24 hour recharge time
- Optional internal battery heater (IH) allows operation in temperatures as low as -4°F to 122°F (-20°C to 50°C)
- California Energy Commission (CEC) compliant



SPECIFICATIONS

- Illumination:** Long-life, high-intensity, red or green LEDs with 3.6W LED lamp heads
- Housing:** UV stabilized, impact and corrosion resistant 5VA plastic enclosure with one-piece, molded, weather-proof gasket
- Input:** 120/277VAC Dual primary, 60Hz
- Battery:** Maintenance-free NiCad battery
- Operating Temp:** 0°C to 50°C (32°F to 122°F)
-20°C to 50°C (-4°F to 122°F) with IH option
- Run Time:** UL Listed 90 minute emergency run time, 24 hour recharge time
- Electrical:** Low voltage disconnect eliminates deep discharge
- Legend:** Fully-illuminated 6" characters with 3/4" stroke and field-selectable directional chevrons
- Mounting:** Ceiling, end or wall mount, includes die-cast aluminum mounting plate
- Finishes:** Black, Gray or White
- Options:** G2 - Self-test/Self-diagnostics
R - 7.2W Remote Capable
IH - Internal Battery Heater
TRH - Tamper Resistant Hardware
- Certifications:** UL 924 Listed for Wet Locations, meets or exceeds NEC requirements and NFPA 101, California Energy Commission (CEC) compliant
- Warranty:** Any component that fails due to a manufacturing defect is guaranteed for five years with a separate five year prorated warranty on the battery. The warranty does not cover physical damage, abuse or instances of uncontrollable natural forces. See the full Exitronix warranty document for detailed information.



ORDERING INFORMATION Example: VEX-WPC-1-R-W-G2

Series	# of Faces	Legend	Finish	Options (Factory Installed)
VEX-WPC	1 = Single-face	G = Green	B = Black w/Black Face	G2 = Self-test/Self-diagnostics
	2 = Double-face	R = Red	G = Gray w/White Face	IH = Internal Battery Heater
			W = White w/White Face	R ¹ = Remote Capable
				TRH = Tamper-resistant Hardware
				Accessories² (Field Installed)
				XG-6 = Poly Guard, Back Mount
Notes				RL1-WP ³ = Single Remote Lamp With Mounting Plate
¹ 6V up to 7.2W				2RL1-WP ³ = Double Remote Lamp With Mounting Plate
² Order as separate line item				MLED1 ³ = Single Remote Lamp With Mounting Plate
³ See page 3 for remote lamp ordering information				MLED2 ³ = Double Remote Lamp With Mounting Plate

CONSTRUCTION

The VEX-WPC consists of a precision-molded housing constructed of 5VA flame-retardant, impact-resistant, corrosion-proof, UV-stable polycarbonate plastic with one-piece, molded, weatherproof gasket. Units resist denting, peeling and scratching.

ILLUMINATION

Illumination of the exit face is achieved with ultrabright, energy-efficient, long-lasting green or red LEDs providing reliable, uniform illumination.

Adjustable LED lamp heads feature 3.6W (3 LEDs x 1.2W) per head and provide optimal center-to-center spacing.

ELECTRICAL**Input**

Dual-voltage input 120 or 277VAC @ 60Hz

Nickel Cadmium Battery - NiCad

Exitronix NiCad batteries are maintenance-free with a life expectancy of 15 years. NiCad batteries offer high-discharge rates and continue to perform in a vast temperature range from 0°C to 50°C (32°F to 122°F).

Brownout Circuit

Brownout circuit monitors the line voltage. As the line voltage sags and can no longer illuminate the exit sign to meet UL 924 visibility test, the emergency circuit will turn on to supply a portion or all the power to illuminate the sign for a minimum of 90 minutes until the line voltage is restored.

Low Voltage Disconnect

When the battery's terminal voltage falls below predetermined levels, the low voltage circuit disconnects the emergency lighting load. The disconnect remains in effect until normal power is restored, preventing deep battery discharge and improving the life of the battery. The disconnect will also automatically reconnect the load circuit once the battery voltage returns to a normal value after charging.

Manual Test Magnet

The VEX-WPC provides manual testing by utilizing a magnet against the unit in a specific pattern. Patterns are as follow:

- To initiate a 30 second test, touch and pull away magnet once within two seconds; FLASHING green
- To initiate a 30 minute test, touch and pull away magnet twice within two seconds; BLINKING green "2" times
- To initiate a 90 minute test, touch and pull away magnet three times within two seconds; BLINKING green "3" times
- Interruption, touch and hold magnet for 3-5 seconds
- System reset, touch and hold magnet for more than six seconds

INSTALLATION

The VEX-WPC Series is supplied with a die-cast aluminum mounting plate which allows for top and end mount. Universal knockout on backplate allows for wall mount. Suitable for Indoor, Outdoor, Damp, and Wet Location applications.

OPTIONS**Guardian Self-Test/Self-Diagnostics (Option: G2)**

The Guardian function is factory preset without any field adjustments. The Guardian Self-test feature performs the following test:

- Online real time monitoring of battery and LED(s): which identifies battery charging, disconnections, and failure of LED(s).
- Self-testing and a 30 second discharge once every 30 days. After AC power has been supplied for 24 hours.
- Self-testing and a 30 minute discharge once every 180 days, after AC power has been supplied for 24 hours.
- Self-testing and a 90 minute discharge once every 365 days, after AC power has been supplied for 24 hours.

Remote Capable - (Option: R)

For the VEX-WPC Series, the "R" option provides the unit with an additional 7.2W of remote power for use with RL1-WP Series or MLED Series remote lamps (ordered separately).

Internal Heater - (Option: IH)

The internal heater option on this fixture is designed to extend the operating temperature range of this unit down to -20°C to 50°C (-4°F to 122°F).

Tamper-Resistant Hardware - (Option: TRH)

Tamper-resistant hardware adds an additional layer of protection to the unit, preventing unwanted access to the interior of the unit or removal of the faceplates.

CONFORMANCE TO CODES & STANDARDS

The VEX-WPC Series is UL Listed and meets or exceeds the following: UL 924, CEC, NEC requirements and NFPA 101.

REMOTE LAMPS (Order as separate line item)

RL FEATURES

- Each lamp contains 15 long lasting, efficient ultra-bright white LEDs totalling 1W per head
- UL Listed for Wet Locations



RL1-WP



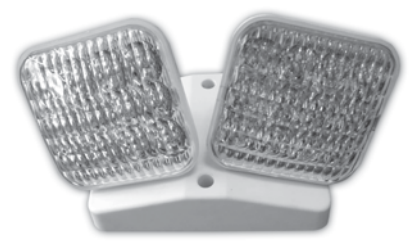
2RL1-WP

MLED FEATURES

- Each lamp contains 8 long lasting, efficient ultra-bright white LEDs totalling 1.5W per head
- Wet Location option available



Single Lamp with Weatherproof (WP) Option



Double Lamp with No Options

REMOTE ORDERING INFORMATION

Example: RL1-WP

Series

RL1-WP = Single Remote Lamp With Mounting Plate

2RL1-WP = Double Remote Lamp With Mounting Plate

REMOTE ORDERING INFORMATION

Example: MLED1-W-G2

Series¹

Finish

Options

MLED1 = Single Remote Lamp

B = Black

G2¹ = Self-test/Self-diagnostics

MLED2 = Double Remote Lamp

G = Gray

WP² = Weatherproof Applications

W = White

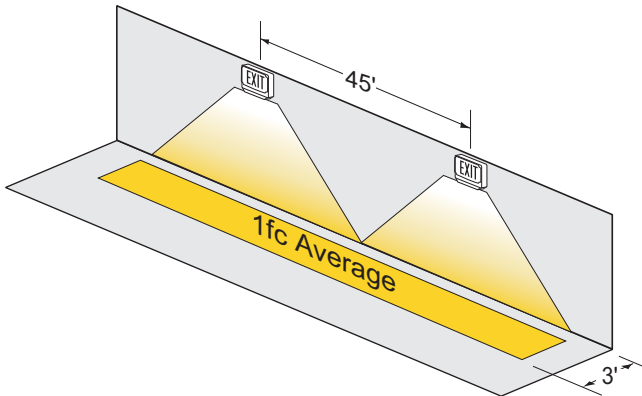
Notes

¹ Unit powering remote lamp head must also have G2 option

² WP option available in Black or Gray finish only

SAMPLE PHOTOMETRICS

Using multiple units mounted at a typical 7.5' delivers 45' center-to-center spacing on a 3' wide egress path.



Using multiple units mounted at a typical 7.5' delivers 40' center-to-center spacing on a 6' wide egress path.

