

DESCRIPTION

The OSL Series Outdoor Sign Light is a 3/4" hub mounted luminaire designed for lighting outdoor walkways and signs in retail and commercial applications. Available in 4' and 8' lengths with static CCT between 3000K-5000K or RGBW and lumen packages from 5,900 to 13,000 lumens. The OSL is available in both downlight or uplight configurations.

SPECIFICATIONS

Construction:

- Extruded aluminum enclosure with die-cast endcaps
- Durable TGIC polyester powder coating featuring a 5-stage pre-treatment for superior adhesion and corrosion protection
- Available in Gloss Black, Bronze, Matte Black, White with natural ends, Silver and Gloss White

Optics/LEDs:

- Clear acrylic diffuser
- Lumen packages from 5,900 to 8,000 lumens
- 3000K, 3500K, 4000K, 5000K CCT or RGBW (Includes DMX Decoder for DMX512. Controller sold separately)
- CRI ≥ 80
- Efficacy up to 165 lumens per watt
- L70 > 50,000 hours

Electrical:

- Universal 120/277VAC, 50/60Hz
- 347-480VAC Option (Option: HVS)
- 0-10V Dimming driver
- Power Factor ≥ 0.90

Installation:

- 3/4" Hub mount downlight with up to 90° rotation, Optional uplight (Option: DF). Mounting hardware not included

Options:

- Door frame for uplight installation (Option: DF)
- IK10 Rated, includes door frame and polycarbonate lens (Option: IK10)

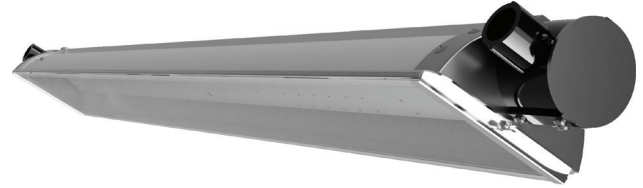
Testing & Compliance:

- ETL Listed for Wet Locations
- Buy American Act compliant
- Build America, Buy America Act compliant
- IK10 (Option: IK10)
- Operating temperatures: -40°C to 45°C (-40°F to 113°F)

Warranty:

- Five Year Warranty (Terms and Conditions Apply)

Model: _____ Date: _____
Accessories: _____
Job Name: _____ Type: _____



Specs at a Glance

Model	OSL-4, OSL-8
Wattage (W)*	48W - 114W
Lumens (lm)	5,900 - 13,000
Efficacy (LPW)	Up to 117
CCT (K)	3000K, 3500K, 4000K, 5000K, RGBW
CRI	≥80
Input Voltage	120/277VAC, 50/60Hz
Operating Temp	-40°C to 45°C (-40°F to 113°F)
Certifications	ETL Listed for Wet Locations, Optional IK10
Warranty	5 Years

* Nominal Wattage, tested at 4000K CCT. See performance table for details.

Note: Environment and application will affect actual performance. Typical values and 25°C (77°F) used for testing. Specifications subject to change without notice.

ORDERING INFORMATION (Example: OSL-4-48-VS-3K-BL-D)

Model	Size	Wattage	Voltage	CCT	Finish	Options (Factory Installed)
OSL	4 = 4'	48 = 48 Watt	VS = 120/277VAC	3K = 3000K	BL = Gloss Black	DF ² = Door Frame
	8 = 8'	57 = 57 Watt	HVS = 347-480VAC	35K = 3500K	BR = Bronze	IK10 ³ = IK10 Rated
		96 = 96 Watt		4K = 4000K	MB = Matte Black	
		114 = 114 Watt		5K = 5000K	NW = White / Natural Ends	
				RGB3K ¹ = RGB + 3000K	SV = Silver	
				RGB35K ¹ = RGB + 3500K	WH = Gloss White	
				RGB4K ¹ = RGB + 4000K		
				RGB5K ¹ = RGB + 5000K		
Notes						
¹ DMX Controller sold separately						
² Allows for uplight installation						
³ Includes polycarbonate lens and door frame						

PERFORMANCE DATA

Model	Wattage	CCT	Lumens	LPW	CRI
OSL-X-48	48W	3000K	5546	116	≥80
OSL-X-48	48W	3500K	5723	119	≥80
OSL-X-48	48W	4000K	5900	123	≥80
OSL-X-48	48W	5000K	6077	127	≥80
LWP-XX-3	57W	3000K	6110	107	≥80
LWP-XX-5	57W	3500K	6305	111	≥80
LWP-XX-5	57W	4000K	6500	114	≥80
LWP-XX-5	57W	5000K	6695	117	≥80
LWP-XX-5	96W	3000K	11092	116	≥80
LWP-XX-6	96W	3500K	11446	119	≥80
LWP-XX-6	96W	4000K	11800	123	≥80
LWP-XX-6	96W	5000K	12154	127	≥80
LWP-XX-6	114W	3000K	12220	107	≥80
LWP-XX-6	114W	3500K	12610	111	≥80
LWP-XX-6	114W	4000K	13000	114	≥80
LWP-XX-8	114W	5000K	13390	117	≥80

DIMENSIONS

