

**DESCRIPTION**

The MAA Series LED direct/indirect over-bed luminaire is a stylish wall-mounted fixture for healthcare and patient room applications. Available in 2, 3, and 4 foot lengths with customizable uplight and downlight configurations or a direct-only option with closed-top design to prevent unwanted uplight. Featuring curved wedge-shaped endcaps in brushed nickel, white, or white marble finishes and a molded white one-piece acrylic lens.

**SPECIFICATIONS**

**Construction:**

- Polycarbonate enclosure with wedge shaped endcaps
- Endcaps available in Brushed, White and White Marble
- Brushed Nickel/White or White Finish with molded one piece acrylic lens

**Optics/LEDs:**

- One piece white acrylic diffuser for uniform LED diffusion
- Lumen packages from 1,000 to 7,000 lumens
- Available as downlight or up/downlight
- 3000K, 3500K, 4000K, 5000K CCT
- CRI ≥ 82
- L70 > 100,000 hours

**Electrical:**

- Universal 120-277VAC, 50/60Hz
- 0-10V Dimming driver
- Power Factor ≥ 0.90

**Installation:**

- Surface wall mount

**Options:**

- Low Voltage Controller allows for control via patient hand-held device, bed side rail controls, or wall control switch (Option: LVC)
- Integral Battery Backup provides 7.5-watt emergency for continued illumination during power loss (Option: BB)
- Tamper Resistant Hardware to deter unauthorized removal or tampering (Option: TRH)

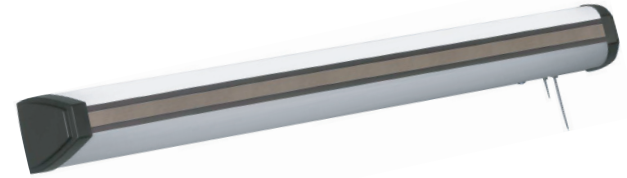
**Testing & Compliance:**

- cETL Listed
- Buy American Act compliant
- Build America, Buy America Act compliant
- Operating temperatures: -30°C to 50°C (-22°F to 122°F)

**Warranty:**

- Five Year Warranty (Terms and Conditions Apply)

Model: \_\_\_\_\_ Date: \_\_\_\_\_  
 Accessories: \_\_\_\_\_  
 Job Name: \_\_\_\_\_ Type: \_\_\_\_\_



**APPLICATIONS**

- Patient Rooms



Specs at a Glance	
<b>Wattage (W)*</b>	6W - 44W
<b>Lumens (lm)</b>	1,000 - 7,000
<b>Efficacy (LPW)</b>	Up to 165
<b>CCT (K)</b>	3000K, 3500K, 4000K, 5000K
<b>CRI</b>	≥ 82
<b>Input Voltage</b>	120-277VAC, 50/60Hz
<b>Operating Temp</b>	-30°C to 50°C (-22°F to 122°F)
<b>Certifications</b>	cETL Listed
<b>Warranty</b>	5 Years

\* Nominal Wattage, tested at 4000K CCT. See performance table for details.

Note: Environment and application will affect actual performance. Typical values and 25°C (77°F) used for testing. Specifications subject to change without notice.

**ORDERING INFORMATION** (Example: MAA-2-6-3K-6-3K-VS-1-S2-WH-BN-BB)

Model	Size	Downlight Wattage	Downlight CCT	Uplight Wattage	Uplight CCT	Voltage	Circuits
MAA	2 = 2'	6 = 6 Watts	3K = 3000K	BLANK = None	BLANK = None	VS = 120-277VAC	1 = 1 Circuit
	3 = 3'	12 = 12 Watts	35K = 3500K	6 = 6 Watts	3K = 3000K		2 = 2 Circuit
	4 = 4'	15 = 15 Watts	4K = 4000K	12 = 12 Watts	35K = 3500K		
		18 = 18 Watts	5K = 5000K	15 = 15 Watts	4K = 4000K		
		22 = 22 Watts		18 = 18 Watts	5K = 5000K		
		25 = 25 Watts		22 = 22 Watts			
		31 = 31 Watts		25 = 25 Watts			
		37 = 37 Watts		31 = 31 Watts			
		44 = 44 Watts		37 = 37 Watts			
				44 = 44 Watts			

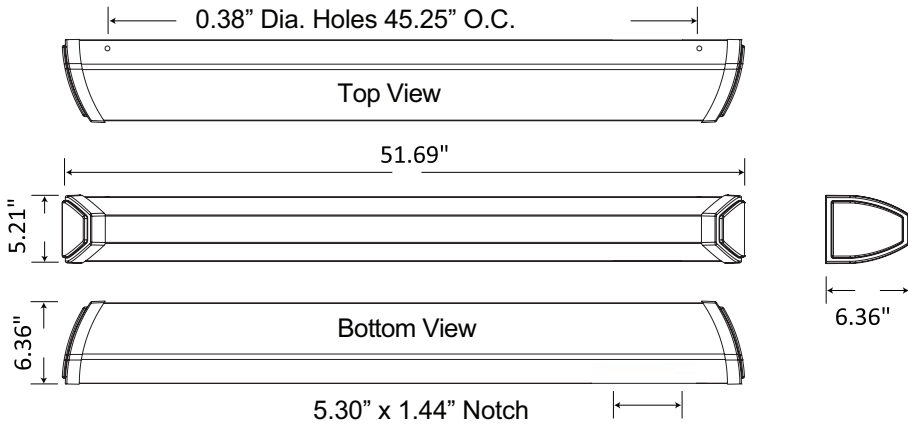
Switching	Finish	Endcap Finish	Driver	Options (Factory Installed)
BLANK = None	BNWH = Nickel/ White Center	BN = Brushed Nickel	BLANK = 0-10V Dimming Driver	BB = 7.5 Watt Battery Backup
S2 = 2 Position Pull Chain	WH = White	WH = White		LVC = Low Voltage Controller
S3 = 3 Position Pull Chain		WM = White Marble		TRH = Tamper Resistant Hardware

## PERFORMANCE DATA

Model	Wattage	CCT	Lumens*	LPW	CRI
MAA-X-6-3K-VS	6.3W	3000	940	149	≥82
MAA-X-6-35K-VS	6.3W	3500	970	154	≥82
MAA-X-6-4K-VS	6.3W	4000	1000	159	≥82
MAA-X-6-5K-VS	6.3W	5000	1030	163	≥82
MAA-X-12-3K-VS	12.5W	3000	1880	150	≥82
MAA-X-12-35K-VS	12.5W	3500	1940	155	≥82
MAA-X-12-4K-VS	12.5W	4000	2000	160	≥82
MAA-X-12-5K-VS	12.5W	5000	2060	165	≥82
MAA-X-15-3K-VS	15.6W	3000	2350	151	≥82
MAA-X-15-35K-VS	15.6W	3500	2425	155	≥82
MAA-X-15-4K-VS	15.6W	4000	2500	160	≥82
MAA-X-15-5K-VS	15.6W	5000	2575	165	≥82
MAA-X-18-3K-VS	18.8W	3000	2820	150	≥82
MAA-X-18-35K-VS	18.8W	3500	2910	155	≥82
MAA-X-18-4K-VS	18.8W	4000	3000	160	≥82
MAA-X-18-5K-VS	18.8W	5000	3090	164	≥82
MAA-X-22-3K-VS	21.9W	3000	3290	150	≥82
MAA-X-22-35K-VS	21.9W	3500	3395	155	≥82
MAA-X-22-4K-VS	21.9W	4000	3500	160	≥82
MAA-X-22-5K-VS	21.9W	5000	3605	165	≥82
MAA-X-25-3K-VS	25W	3000	3760	150	≥82
MAA-X-25-35K-VS	25W	3500	3880	155	≥82
MAA-X-25-4K-VS	25W	4000	4000	160	≥82
MAA-X-25-5K-VS	25W	5000	4120	165	≥82
MAA-X-31-3K-VS	31.3W	3000	4700	150	≥82
MAA-X-31-35K-VS	31.3W	3500	4850	155	≥82
MAA-X-31-4K-VS	31.3W	4000	5000	160	≥82
MAA-X-31-5K-VS	31.3W	5000	5150	165	≥82
MAA-X-37-3K-VS	37.5W	3000	5640	150	≥82
MAA-X-37-35K-VS	37.5W	3500	5820	155	≥82
MAA-X-37-4K-VS	37.5W	4000	6000	160	≥82
MAA-X-37-5K-VS	37.5W	5000	6180	165	≥82
MAA-X-44-3K-VS	43.8W	3000	6580	150	≥82
MAA-X-44-35K-VS	43.8W	3500	6790	155	≥82
MAA-X-44-4K-VS	43.8W	4000	7000	160	≥82
MAA-X-44-5K-VS	43.8W	5000	7210	165	≥82

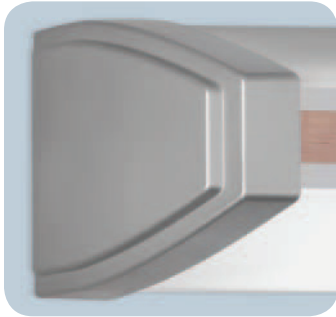
\*For uplight reference the same corresponding downlight lumens. For example an MAA-4-14-4K-4K-VS-1-WH-WH would have 2,000 lumens of downlight and 1,000 lumens of uplight

**DIMENSIONS**



4.53" from outside end of diffuser cap

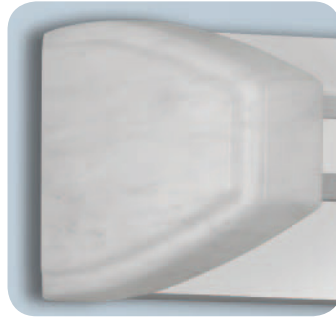
**ENDCAP FINISHES**



BN - Brushed Nickel



WH - White



WM - White Marble

**FINISHES**



BNWH - Nickel/ White Center



WH - White