

DESCRIPTION

The LWP Series Architectural Linear LED Wallpack with Egress Option is a sleek low profile design for use above doorways. Available in lengths 20 - 102 inches to match a variety of doorways with static CCT between 2700K-5000K and lumen packages from 500 to 8,000 lumens, the LWP delivers soft, diffused illumination through a polycarbonate diffuser. An available emergency egress option (BB) offers 14 watts of battery backup for continued illumination during power outages.

SPECIFICATIONS

Construction:

- Extruded aluminum enclosure with die-cast endcaps
- Durable TGIC polyester powder coating featuring a 5-stage pre-treatment for superior adhesion and corrosion protection
- Available in Black, Bronze, Silver and White
- Inset extruded aluminum doorframe secured with Torx stainless steel fasteners

Optics/LEDs:

- Lens is an extruded UV-stabilized opal polycarbonate with integral prisms
- Lumen packages from 500 to 8,000 lumens
- 2700K, 3000K, 3500K, 4000K, 5000K CCT
- CRI ≥ 82, optional 90 CRI (Option: 90)
- Efficacy up to 165 lumens per watt
- L70 > 130,000 hours

Electrical:

- Universal 120/277VAC, 50/60Hz
- 0-10V Dimming driver
- Power Factor ≥ 0.90

Installation:

- Quick mount installation with french cleat bracket

Options:

- Integral battery backup provides 14 watts of emergency power for continued illumination during power loss (Option: BB)
- Cold location battery backup (Option: CL)
- High color-rendering LEDs with ≥90 CRI for improved color accuracy (Option: 90)
- Integral occupancy sensor (Option: MS)
- Button type universal photocontrol sensor 120/277VAC (Option: PC)

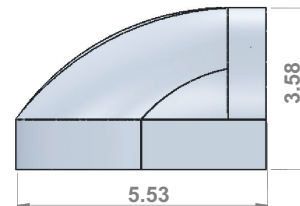
Testing & Compliance:

- cETL Listed for Wet Locations
- Buy American Act compliant
- Build America, Buy America Act compliant
- Operating temperatures: -30°C to 50°C (-22°F to 122°F)

Warranty:

- Five Year Warranty (Terms and Conditions Apply)

Model: _____ Date: _____
Accessories: _____
Job Name: _____ Type: _____



Specs at a Glance						
Model	LWP-20	LWP-31	LWP-43	LWP-54	LWP-78	LWP-104
Wattage (W)*	3W, 6W	3W, 5W, 6W, 12W	3W, 5W, 6W, 8W, 12W, 20W	3W, 5W, 6W, 8W, 11W, 12W, 20W, 25W	3W, 5W, 6W, 8W, 11W, 12W, 17W, 20W, 25W, 37W	3W - 50W
Lumens (lm)	500 - 1,000	500 - 2,000	500 - 3,000	500 - 4,000	500 - 6,000	500 - 8,000
Efficacy (LPW)	Up to 165					
CCT (K)	2700K, 3000K, 3500K, 4000K, 5000K					
CRI	≥82, Optional 90					
Input Voltage	120/277VAC, 50/60Hz					
Operating Temp	-30°C to 50°C (-22°F to 122°F)					
Certifications	cETL Listed for Wet Locations					
Warranty	5 Years					

* Nominal Wattage, tested at 4000K CCT. See performance table for details.

Note: Environment and application will affect actual performance. Typical values and 25°C (77°F) used for testing. Specifications subject to change without notice.

ORDERING INFORMATION (Example: LWP-20-3-VS-27K-WH-BB)

Model	Size	Wattage	Voltage	CCT	Finish	Driver	Options (Factory Installed)
LWP	20' = 20.80"	3 = 3 Watt	VS = 120/277VAC	27K = 2700K	BL = Black	BLANK = 0-10V Dimming Driver	90 = 90 CRI
	31' = 31.48"	5 = 5 Watt		3K = 3000K	BR = Bronze		BB = 14 Watt Battery Backup
	43' = 43.30"	6 = 6 Watt		35K = 3500K	SV = Silver		CL = Cold Location Battery Backup
	54' = 54.75"	8 = 8 Watt		4K = 4000K	WH = White		MS = Motion Sensor
	78' = 78.75"	11 = 11 Watt		5K = 5000K			PC = Photo Control
	104' = 104.64"	12 = 12 Watt					
		17 = 17 Watt					
		20 = 20 Watt					
		23 = 23 Watt					
		25 = 25 Watt					
		37 = 37 Watt					
		50 = 50 Watt					

Notes
¹ Only available in 3 and 6 Watt

² Only available in 3, 5, 6 and 12 Watt

³ Only available in 3, 5, 6, 8, 12 and 20 Watt

⁴ Only available in 3, 5, 6, 8, 11, 12, 20 and 25 Watt

⁵ Only available in 3, 5, 6, 8, 11, 12, 17, 20, 25 and 37 Watt

PERFORMANCE DATA

Model	Wattage	CCT	Lumens	LPW	CRI
LWP-XX-3	3.125W	2700K	455	146	≥82
LWP-XX-3	3.125W	3000K	470	150	≥82
LWP-XX-3	3.125W	3500K	485	155	≥82
LWP-XX-3	3.125W	4000K	500	160	≥82
LWP-XX-3	3.125W	5000K	515	165	≥82
LWP-XX-5	5W	2700K	728	146	≥82
LWP-XX-5	5W	3000K	752	150	≥82
LWP-XX-5	5W	3500K	776	155	≥82
LWP-XX-5	5W	4000K	800	160	≥82
LWP-XX-6	5W	5000K	824	165	≥82
LWP-XX-6	6.25W	2700K	910	146	≥82
LWP-XX-6	6.25W	3000K	940	150	≥82
LWP-XX-6	6.25W	3500K	970	155	≥82
LWP-XX-6	6.25W	4000K	1000	160	≥82
LWP-XX-6	6.25W	5000K	1030	165	≥82
LWP-XX-8	8.75W	2700K	1274	146	≥82
LWP-XX-8	8.75W	3000K	1316	150	≥82
LWP-XX-8	8.75W	3500K	1358	155	≥82
LWP-XX-8	8.75W	4000K	1400	160	≥82
LWP-XX-8	8.75W	5000K	1442	165	≥82
LWP-XX-11	11.25W	2700K	1638	146	≥82
LWP-XX-11	11.25W	3000K	1692	150	≥82
LWP-XX-11	11.25W	3500K	1746	155	≥82
LWP-XX-11	11.25W	4000K	1800	160	≥82
LWP-XX-11	11.25W	5000K	1854	165	≥82
LWP-XX-12	12.5W	2700K	1820	146	≥82
LWP-XX-12	12.5W	3000K	1880	150	≥82
LWP-XX-12	12.5W	3500K	1940	155	≥82
LWP-XX-12	12.5W	4000K	2000	160	≥82
LWP-XX-12	12.5W	5000K	2060	165	≥82

Specifications are subject to change without notice.
Installation must be performed in accordance with
Barron Lighting Group installation instructions.

10810474

PERFORMANCE DATA (continued)

Model	Wattage	CCT	Lumens	LPW	CRI
LWP-XX-17	17.5W	2700K	2548	146	≥82
LWP-XX-17	17.5W	3000K	2632	150	≥82
LWP-XX-17	17.5W	3500K	2716	155	≥82
LWP-XX-17	17.5W	4000K	2800	160	≥82
LWP-XX-17	17.5W	5000K	2884	165	≥82
LWP-XX-20	20.8W	2700K	2730	131	≥82
LWP-XX-20	20.8W	3000K	2820	136	≥82
LWP-XX-20	20.8W	3500K	2910	140	≥82
LWP-XX-20	20.8W	4000K	3000	144	≥82
LWP-XX-20	20.8W	5000K	3090	149	≥82
LWP-XX-23	23.75W	2700K	3458	146	≥82
LWP-XX-23	23.75W	3000K	3572	150	≥82
LWP-XX-23	23.75W	3500K	3686	155	≥82
LWP-XX-23	23.75W	4000K	3800	160	≥82
LWP-XX-23	23.75W	5000K	3914	165	≥82
LWP-XX-25	25W	2700K	3640	146	≥82
LWP-XX-25	25W	3000K	3760	150	≥82
LWP-XX-25	25W	3500K	3880	155	≥82
LWP-XX-25	25W	4000K	4000	160	≥82
LWP-XX-25	25W	5000K	4120	165	≥82
LWP-XX-37	37.5W	2700K	5460	146	≥82
LWP-XX-37	37.5W	3000K	5640	150	≥82
LWP-XX-37	37.5W	3500K	5820	155	≥82
LWP-XX-37	37.5W	4000K	6000	160	≥82
LWP-XX-37	37.5W	5000K	6180	165	≥82
LWP-XX-50	50W	2700K	7280	146	≥82
LWP-XX-50	50W	3000K	7520	150	≥82
LWP-XX-50	50W	3500K	7760	155	≥82
LWP-XX-50	50W	4000K	8000	160	≥82
LWP-XX-50	50W	5000K	8240	165	≥82

FRENCH CLEAT BRACKET

