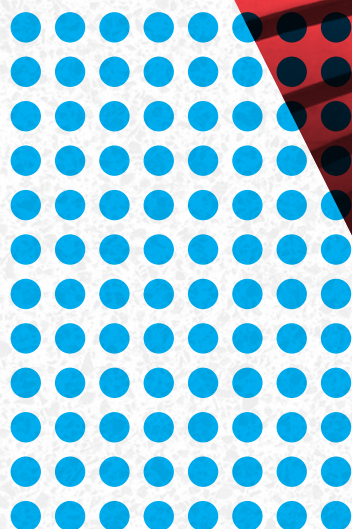


VEX

THERMOPLASTIC LED EXIT



TOOL-LESS BATTERY
ACCESS DOOR



ERROR-PROOF
FAULT DISPLAY



COMPACT, LOW PROFILE

 **EXITRONIX**[®]
emergency lighting

VEX

THERMOPLASTIC LED EXIT

Attractive and easy to install, the VEX Series combines contemporary styling with quality LED illumination. The optional patent pending Numeric Indicator option (G2-NI) provides additional peace of mind with maintenance innovations to complement any application.

Key Features

- Compact, low profile design
- Easy to install, snap together design
- Rugged, injection-molded UL 94 5VA flame-retardant, high-temperature thermoplastic housing
- Easy maintenance features with G2-NI option
 - Tool-less battery access door on front exit face plate
 - Isolated battery compartment for safe installation and maintenance
 - Hinged door helps prevent loss or misplacement during installation and maintenance
 - Guardian Self-Test/Self-Diagnostics with Numeric Indicator for error status/fault display
- Ceiling, wall or end mounted
- Maintenance-free NiCad battery
- UL Listed 90 minute emergency run time, 24 hour recharge time
- Fully-illuminated 6" characters with 3/4" stroke
- Field selectable directional chevron knockouts
- 120/277VAC dual primary, 60Hz input
- Standard finishes: Black or White
- Consult factory for alternative speciality signs
- Suitable for Damp Locations
- Fixture series may be built to comply with the American Recovery and Reinvestment Act of 2009 (ARRA) requirements (USA option) - contact factory for details
- Five year warranty

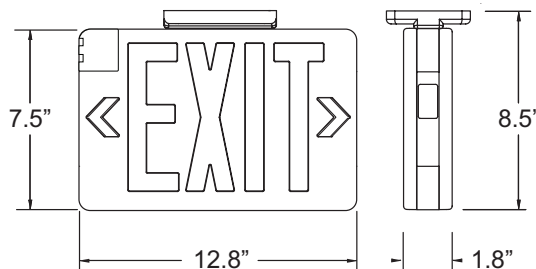


Numeric Indicator for dependable visual status and fault detection. Only available with G2-NI option.



Tool-less hinged door for easy and safe access to isolated low voltage battery compartment. Only available with G2-NI option.

Dimensions



ORDERING INFORMATION Example: VEX-U-BP-WB-WH-G2-NI

Series	Style	Housing Type	Power Source	Finish	Options (Factory Installed)		Accessories ⁸ (Field Installed)
VEX = Red	U ¹ = Universal	BP = Plastic	LB = AC Only	BL = Black	220V ³ = 220VAC, 50Hz Input		ER1-KIT ⁷ = 1' Pendant Mount Kit
GVEX = Green	I ² = Single Face		WB = With Battery	WH = White	2CI ⁴ = 2 Circuit Input		ER2-KIT ⁷ = 2' Pendant Mount Kit
					G2 ⁵ = Self-Test/Self-Diagnostics		VEPA = Pendant Adapter
Notes					G2-NI ^{5,6} = Self-Test/Self-Diagnostics with Numeric Indicator and Battery Access Door		WG-1 = Wire Guard (Back Mount)
¹ Universal includes second exit face (without battery door) and backplate							WG-2 = Wire Guard (End Mount)
² Available for Speciality Signs only - not compatible with G2-NI option					USA = Meets Buy America Requirements		WG-3 = Wire Guard (Ceiling Mount)
³ 220VAC not available with G2-NI option							XG-1 = Poly Guard (Back Mount)
⁴ 2CI not available with WB, G2 or G2-NI				Note: See Specialty Signage specification for custom/alternate legends			XG-3 = Poly Guard (Ceiling Mount)
⁵ G2 and G2-NI not available with LB							
⁶ Only option available with Battery Door on front exit face plate							
⁷ Requires VEPA option							
⁸ Order as separate line item							

Please visit our website for the latest information.

MKT-LIT-VEX 10840257 03/18



BARRON
lighting group
800.533.3948 • www.barronltg.com