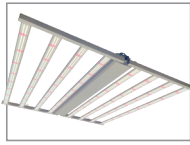




**LED Lighting**



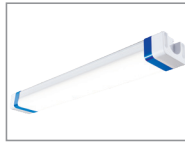
**VARIUS**  
90W LED Grow Light Bars  
Red & Blue Spectrums, ETL  
Listed



**FULGENT**  
720W 8 Bar, Full Spectrum  
LED Grow Light,  
UL Listed



**TERRA**  
600W Full Spectrum  
Linear LED Grow Light,  
ETL Listed



**GRM-40L-WH**  
40W White Full Spectrum  
LED Clone Light,  
UL Listed



**CLN-200L**  
200W White Full Spectrum  
LED Veg/Clone Light,  
UL Listed



**WBVB-300L**  
300W White Full  
Spectrum LED Veg Light  
UL Listed

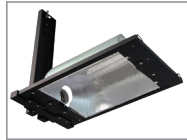


**FPV14-A / FPV24-A**  
30W / 60W White Full  
Spectrum LED Veg Light,  
ETL Listed

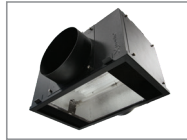
**HID Reflectors**



**GLH-HDE-E-UL**  
Archon DE Reflector,  
UL 8800 Listed, Patented  
SafeDElock socket  
(Patent No. 10,720,741)



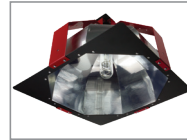
**GLH-HSE**  
HSE Convex SE  
Reflector, ETL Listed



**GLH-HDE-8**  
HDE-8 Air-Cooled  
DE Reflector, ETL Listed



**GLH-OG-8**  
OG Vertical Air-Cooled SE  
Reflector, UL Listed



**GLH-OG-315**  
OG-315 Vertical Open  
SE Reflector, UL 8800 Listed

**HID Systems**



**GLH-HDE-E-UL-1000-  
HPS-240/277**  
Archon DE Reflector, 1000W  
HPS DE Lamp, 1000W DE  
Ballast 240/277VAC



**GLH-HSE-1000-HPS-  
DA-240/277**  
HSE Convex SE Reflector,  
1000W HPS DA Lamp, 1000W  
DE Ballast 240/277VAC



**GLH-HSE-315-CSI-  
120/277**  
HSE Convex SE Reflector,  
315W HPS DA Lamp, 315W  
CMH Ballast 120/277VAC



**GLH-HDE-8-1000-  
HPS-240/277**  
HDE-8 Air-Cooled DE Reflector,  
1000W HPS DE Lamp, 1000W  
DE Ballast 240/277VAC

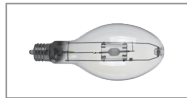


**GLH-OG-8-1000-HPS-  
DA-240/277**  
OG Vertical Air-Cooled SE  
Reflector, 1000W HPS Lamp,  
1000W DE Ballast 240/277VAC

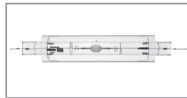


**GLH-OG-315-8-315-  
CSI-120/277**  
OG-315 Vertical Open SE  
Reflector, 315W CMH T15 SE Lamp,  
315W CMH Ballast 120/277VAC

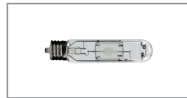
**Lamps**



**GLL-315-CSI**  
315W Single-Ended  
Mogul Base CMH



**GLL-315-CSI-DE**  
315W Double-Ended  
CMH



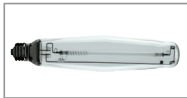
**GLL-315-CSI-T15**  
315W T15 Single-Ended  
Mogul Base CMH



**GLL-1000-HDEL-DE**  
1000W Double-Ended  
Real Red HPS 2000K



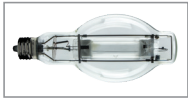
**GLL-1000-HPS-DA**  
1000W Dual-Arc Mogul  
Base Real Red HPS 2000K



**GLL-1000-HPS**  
1000W Mogul Base  
Real Red HPS 2000K



**GLL-600-HPS**  
600W Mogul Base  
Real Red HPS 2000K



**GLL-1000-MH**  
1000W Mogul Base  
True Blue MH 6500K



**GLL-600-MH**  
600W Mogul Base  
True Blue MH 6500K



**GLL-3-T5HO-54**  
4' 54W T5HO Bi-Pin  
Real Red 3000K



**GLL-3-T5HO-24**  
2' 24W T5HO Bi-Pin  
Real Red 3000K



**GLL-65-T5HO-54**  
4' 54W T5HO Bi-Pin  
True Blue 6500K



**GLL-65-T5HO-24**  
2' 24W T5HO Bi-Pin  
True Blue 6500K

**Ballasts**



**GLB-1000-DE-240/277**  
1000W DE Ballast  
240/277VAC,  
UL Listed



**GLB-315-A-120/277**  
315W CMH Digital Ballast  
120/277VAC,  
UL Listed

**Plant-Safe Egress & Task Lighting**



**GLE-S**  
Plant-Safe Soft Green  
Emergency Exit,  
UL Listed



**GLE-GL**  
Plant-Safe Soft Green  
Vaportight Lighting,  
UL 8800 Listed



**GLE-GL-RKU**  
Plant-Safe Soft Green  
Retro-fit Kit