



TRACE LITE
commercial & industrial lighting

barronltg.com

120-277VAC SURFACE MOUNT LED DOWNLIGHT

3500K and 4000K Color temperatures.

120-277VAC, 0-10V Dimming.

Available in 7" and 9" diameters.

Ultra slim, only 1/2" thick.

FJX-VS SERIES

120-277VAC LED Surface Mount Downlight

The FJX Series is a 120-277VAC surface mount LED downlight offered in 3500K and 4000K CCT. The FJX's minimalistic 1/2" profile blends seamlessly in ceilings for a smooth, architectural appearance and offers even illumination with its diffused lens. The FJX's rigid mounting bracket simplifies installation directly to a recessed J-box for a secure, flush fit to the ceiling. Accessories are available for installation in recessed housings. The FJX Series is offered in 7" and 9" configurations with 0-10V dimming for additional energy savings.

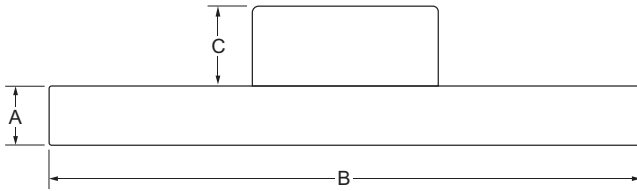


FEATURES

- Available in 7" and 9" diameters
- Offered in 890 lumens and 1340 lumen packages
- Ultra-slim surface mount downlight, only 0.5" thick
- 3500K and 4000K Color temperatures
- 0-10VAC Dimming
- Installs directly to 4" recessed J-box, virtually flush mount to ceiling surface
- Accessory kits available for retrofit installation in a downlight



DIMENSIONS



Model	A	B	C
FJX-R7-12-VS	0.5"	7.0"	1.0"
FJX-R9-18-VS	0.5"	8.9"	1.0"

Specs at a Glance

Model	FJX-R7-12-VS	FJX-R9-18-VS
Diameter	7"	9"
Wattage (W)*	12W	18W
Lumens (lm)	890	1340
Efficacy (LPW)	75	75
Equivalency (W)	75W	100W
CCT (K)	3500K, 4000K	
Distribution	120°	
CRI	>80	
Input Voltage	120-277VAC, 60Hz, 0-10VDC Dimming	
Operating Temp	-20°C to 40°C (-4°F to 104°F)	
Certifications	ETL Listed, Suitable for Damp Locations, Energy Star Qualified	
Warranty	5 Years	
Weight	1.1 lbs	1.76 lbs

Note: Environment and application will affect actual performance. Typical values and 25°C (77°F) used for testing. Specifications subject to change without notice.

Ordering Information Example: FJX-R9-18-VS-35K

Model	Description
FJX-R7-12-VS-35K	Surface Mount Downlight, 7" Diameter, 12W LED, 120-277VAC, 3500K CCT, White Finish
FJX-R7-12-VS-4K	Surface Mount Downlight, 7" Diameter, 12W LED, 120-277VAC, 4000K CCT, White Finish
FJX-R9-18-VS-35K	Surface Mount Downlight, 9" Diameter, 18W LED, 120-277VAC, 3500K CCT, White Finish
FJX-R9-18-VS-4K	Surface Mount Downlight, 9" Diameter, 18W LED, 120-277VAC, 4000K CCT, White Finish

Accessories¹ (Field Installed)

FJX-R7-NC = Satin Nickel Magnetic Trim For 7" Round
FJX-R9-NC = Satin Nickel Magnetic Trim for 9" Round
FJX-R7-BL = Satin Black Magnetic Trim For 7" Round
FJX-R9-BL = Satin Black Magnetic Trim for 9" Round
FJX-TRK-56 = Torsion Clips for 5/6" Recessed Housing, E26 Socket Adapter included

Notes

¹ Order as a separate line item

Shipped in a separate box for final installation in the field



800.533.3948 | barronltg.com

MKT-LIT-FJX 10840356 01/20