

CRL Series

Specification Grade LED Emergency Lighting Unit
for Recessed T-Bar Ceilings



Long Life LED
Up to 60ft Spacing
Tool-less Battery Access
Numeric Fault Indicator



ASSEMBLED IN
USA
WITH GLOBAL COMPONENTS

5/5
WARRANTY

BARRON EXITRONIX
emergency lighting

CRL Series

Specification Grade LED Emergency Lighting Unit
for Recessed T-Bar Ceilings



The CRL Series combines maintenance innovations with performance and dependability into a specification grade steel enclosure for recessed T-bar ceiling applications.

Standard Features

- Standard tool-less front battery accessibility for ease of maintenance
- Isolated battery compartment for safe installation and maintenance
- Optional patent-pending Numeric Indicator option (G2-NI) for error-proof visual display of fault detection/status
- Fully-adjustable 3.6W (REN3M) or 2.9W (REN3) LED lamps deliver industry-leading spacing up to 60'
- Wide lens optic option optimizes min-to-max ratio for low mounting height applications
- Enclosure constructed of rugged 20 gauge steel
- White finish blends seamlessly for clean, architectural appearance in a grid ceiling
- Conduit entry for flexibility in wiring
- Maintenance-free NiMH battery
- Brownout, low voltage, overload and short circuit protection standard
- 90 minute emergency run time, 24 hour recharge time
- Optional Guardian Self-Test/ Self-Diagnostics (G2)
- 120/277VAC dual primary, 50/60Hz input
- Assembled in the USA with global components
- 5 year fixture/ 5 year pro-rated battery warranty



Tool-less hinged door for easy and safe access to isolated low voltage battery compartment.

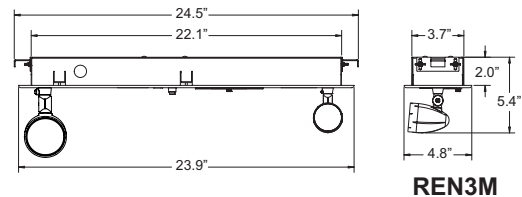


Optional Numeric Indicator (G2-NI) for dependable visual status and fault detection.

Available Options

- Guardian Self-Test/ Self-Diagnostics (G2)
- Numeric Indicator (G2-NI) for dependable visual status and fault identification
- Wide Lens (WL) with 58° viewing angle

Dimensions



Ordering Information Example: CRL-8-REN3-2-G2

Series	Wattage	Lamp Heads	# of Lamps	Options (Factory Installed)
CRL = 6 Volt NiMH	8 = 8 Watt	REN3 = PAR16 Renegade 2.9W LED	2 = 2 Lamps	G2 ¹ = Self-test/Self-diagnostics with LED Indicator
		REN3M = PAR16 Renegade MAX 3.6W LED		G2-NI ² = Self-test/Self-diagnostics with Numeric Indicator
				WL = Wide Lens, 58° Viewing Angle
Notes				Accessories³ (Field Installed)
¹ REN3 lamps only				WG-L = Wire Guard (Back mount)
³ REN3M lamps only ²				XG-EL90 = Poly Guard (Back mount)
³ Order as separate line item				

Please visit our website for the latest information.

10840162 Rev 1

