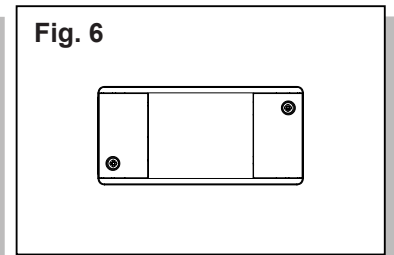
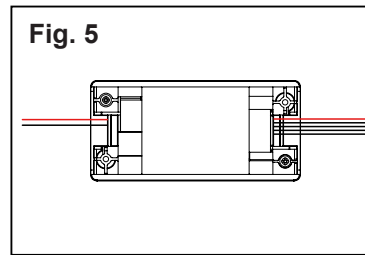
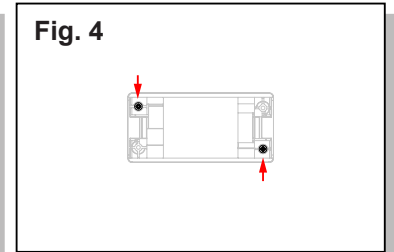
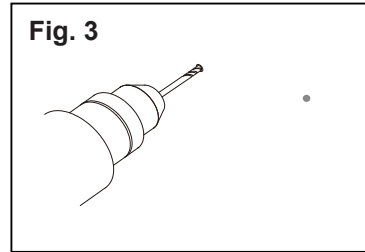
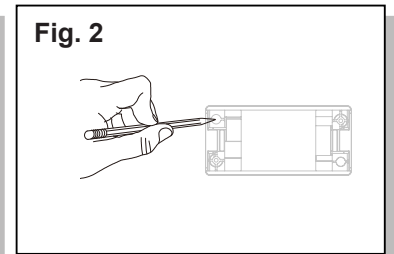
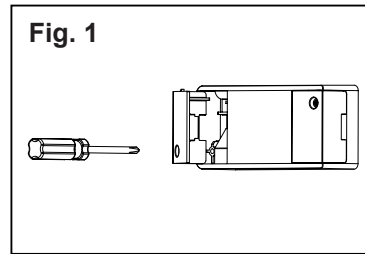


LE-DC4CH

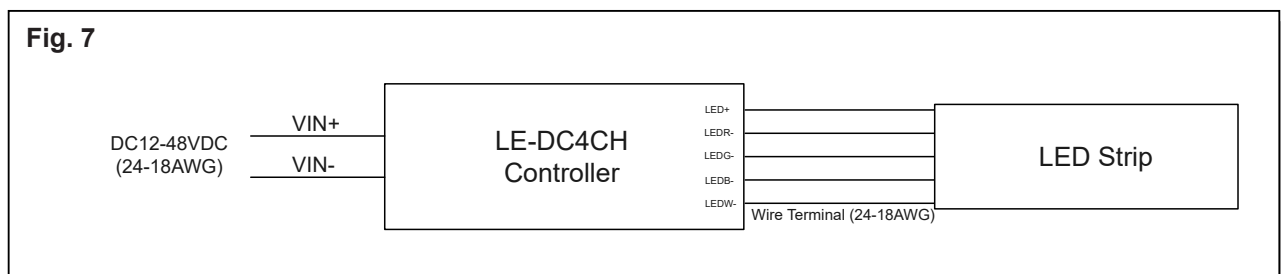
Installation Instructions

Installation

1. Use a Phillips head screwdriver to remove the end caps of the controller. (Fig. 1)
2. Mark the position you would like to install the controller. (Fig. 2)
3. Using the two previous marks, drill two holes with a power drill. (Fig. 3)
4. Secure the controller in place using self-tapping screws. (Fig. 4)
5. Connect the input and output power supplies. (Fig. 5) Please refer to the **Wiring Diagram** section below. (Fig. 7)
6. Once wiring is complete, reinstall both end caps of the controller. (Fig. 6)
7. Return power back to the source.
8. Commission the sensor via the LiteLogic App.



Wiring Diagram



How to Install LiteLogic App?

Scan QR Code below to download the APP.

Get it from the
App Store



Get it from
Google Play



How to Control Lights with a Phone?

Scan the QR Code below for APP instructions.

