

### DESCRIPTION

The Exitronix ELD-G3 Series emergency LED driver is specifically designed to enable emergency lighting of LED fixtures with the loss of power. The ELD-G3 configuration makes the series suitable for most pre-installation and on-site applications requiring emergency illumination.

The **GUARDIAN G3** remote monitoring and reporting system from Exitronix simplifies code compliance and significantly reduces operating and maintenance costs by offering automated testing, remote monitoring and reporting of emergency fixture status from a centralized location. For standard drivers without remote monitoring and reporting, [click here](#).

### SPECIFICATIONS

<b>Capacity:</b>	8W, 16W
<b>Input Voltage/ Frequency:</b>	120-277VAC, 50/60Hz
<b>Input Current:</b>	0.1A Max. @ 120VAC
<b>Input Power:</b>	6W
<b>Standby Input Power:</b>	8W: 0.96W @ 120VAC, 1.45W @ 277VAC 16W: 0.97W @ 120VAC, 1.46W @ 277VAC
<b>Driver Type:</b>	Limit Max Power
<b>Output Power:</b>	8W, 16W
<b>Output Voltage Range:</b>	20-300VDC (Recommended 30-400VDC)
<b>Load Power Factor Range:</b>	8W: 0.8 @ 120VAC, 0.7 @ 277VAC 16W: 0.9 @ 120VAC, 0.5 @ 277VAC
<b>Number of Output Channels:</b>	1 Channel
<b>RFI-EMI:</b>	FCC Part 15A Non-Consumer
<b>Output Type:</b>	Adaptive Output: 20-300VDC suitable for Non-isolated
<b>Battery Type:</b>	Li-ion
<b>Battery Capacity Available:</b>	8W: 7.2V 3Ah Li-ion 16W: 14.4V 3Ah Li-ion
<b>Battery Recharge Time:</b>	24 Hours
<b>Battery Discharge Time:</b>	90 Minutes Min.
<b>Conduit Length:</b>	13.78" (350mm)
<b>Test Switch Wire Length:</b>	20" (508mm)
<b>Test Switch Remote:</b>	3.3' (1m)
<b>Remote Mounting Distance:</b>	4.92' (1.5m)
<b>Input Surge Protection:</b>	Over-voltage, over-current, over-temp premature, short-circuit, open circuit protection and current limitation
<b>Operating Temperature:</b>	0°C to 50°C (32°F to 122°F)
<b>Sound Rating:</b>	F
<b>Service Life:</b>	40,000 hours
<b>Listing:</b>	UL 924 Listed, RoHS, IP20

Model: \_\_\_\_\_ Date: \_\_\_\_\_  
 Accessories: \_\_\_\_\_  
 Job Name: \_\_\_\_\_ Type: \_\_\_\_\_



### GUARDIAN G3 Self-test/Self-diagnostics, Remote Monitoring and Reporting

The circuit continuously monitors the operating condition of the AC power, battery supply voltage and charging circuit.

The purpose of this option is to provide visual signaling in response to a fault at the battery and/or battery charger. If a failure is detected, visual status will occur immediately via the dual color LED. Refer to instruction manual for detailed information.

The circuit also monitors the transfer circuit as well as performing automatic code compliance testing.

The GUARDIAN G3 remote monitoring and reporting system provides wireless communication between emergency fixtures, enabling maintenance personnel to maintain and test emergency lighting equipment from a central location. System requires additional equipment and setup, consult factory for more information.

### GUARDIAN G3PRO Self-test/Self-diagnostics, Remote Monitoring and Reporting with Automated Email Notifications

The G3PRO model has the features of the standard G3 but adds automated email notifications of fixture status reports (requires internet connection, Wi-Fi or cellular modem supplied by facility).

### Warranty:

Any component that fails due to a manufacturing defect is guaranteed for five years with a separate five year prorated warranty on the battery. The warranty does not cover physical damage, abuse or instances of uncontrollable natural forces. See the full Exitronix warranty document for detailed information. (Terms and Conditions apply)

### Ordering Information Example: ELD-8-CP-G3

Series	Wattage	Power	Self-test/Self-diagnostics
ELD	8 = 8 Watts	CP = Constant Power	G3 <sup>1</sup> = Self-test/Self-diagnostics, Remote Monitoring and Reporting
	16 = 16 Watts		G3PRO <sup>1,2</sup> = Self-test/Self-diagnostics, Remote Monitoring and Reporting w/Automated Email Notifications

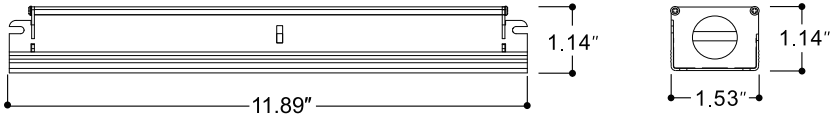
G3 and G3PRO Accessories <sup>3</sup> (Field installed, order as separate line item)	
	GTWY-PRIMARY = Primary Remote Reporting Gateway
	GTWY-SECONDARY = Secondary Remote Gateway, Extends Range
	ROUTER = Wireless Internet Router
	NETWORK-SWITCH-XX = (XX = Specify 5, 8, 16, or 24 Port Switch)
<b>Notes</b>	TAB11 = 11" Tablet, Includes Guardian G3 Software
<sup>1</sup> Requires additional equipment, consult factory for details	TAB12 = 12.4" Tablet, Includes Guardian G3 Software
<sup>2</sup> Requires internet connection, Wi-Fi or cellular modem supplied by facility	WALLBRK-LOCKXX = Locking Wall Bracket (XX = Specify 11" or 12" Tablet)
<sup>3</sup> Order as separate line item	

## Electrical Information

Model	Emergency Power	Input				Output				
		VAC	Hz	mA	W	Min VDC	Max VDC	Min mA	Max mA	Max Output
ELD-8-CP-XX	8W	120-277	50/60	100	6.0	20	300	20	400	8W
ELD-16-CP-XX	16W							40	800	16W

## Dimensions (Images do not include conduit)

### 8W



### 16W



## Wiring Diagram

