

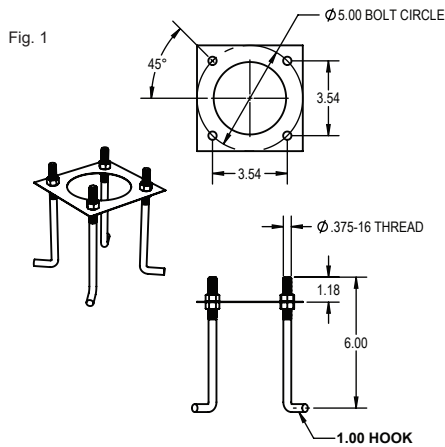
IMPORTANT SAFEGUARDS READ AND FOLLOW ALL SAFETY INSTRUCTIONS.

When using electrical equipment, basic safety precautions should always be followed including the following:

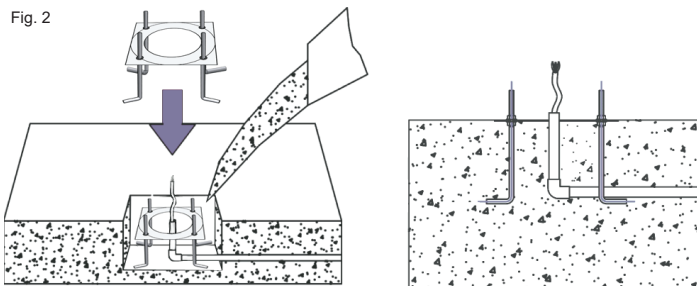
- **DISCONNECT AC POWER SUPPLY BEFORE SERVICING.**
- Installation and servicing of this equipment should be performed by qualified service personnel only.
- Ensure the electricity connections conform to the National Electrical Code and local regulations if applicable.
- Do not mount near gas or electrical heaters.
- Equipment should be mounted in locations and at heights where it will not readily be subjected to tampering by unauthorized personnel.
- The use of accessory equipment not recommended by the manufacturer may cause an unsafe condition. Any modification or use of non-original components will void the warranty and product liability.
- Do not use this equipment for other than intended use.

SAVE THESE INSTRUCTIONS!

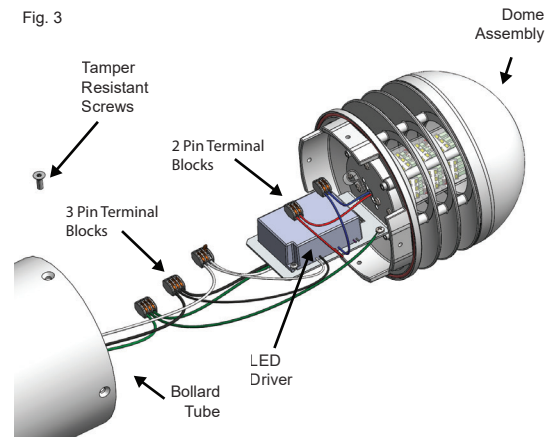
1. Secure anchor bolt to template plate.



2. Install anchor bolts in concrete. Pass electrical wires through center hole in anchor bolt template.

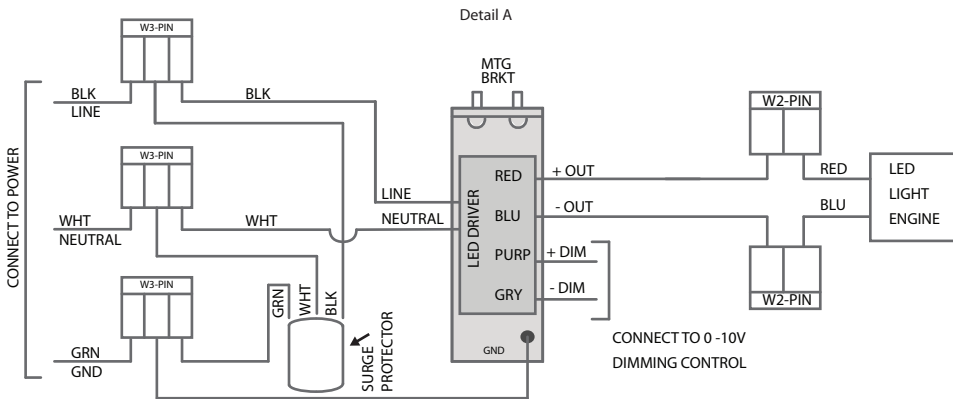
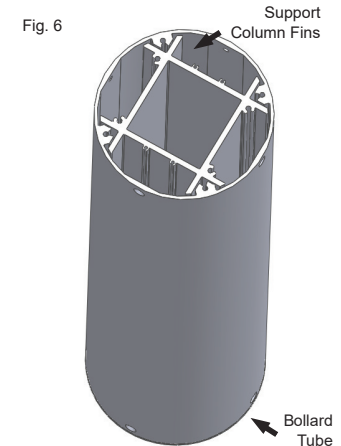
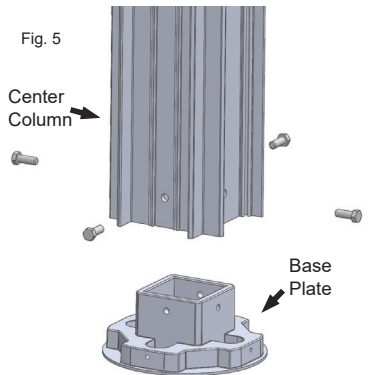
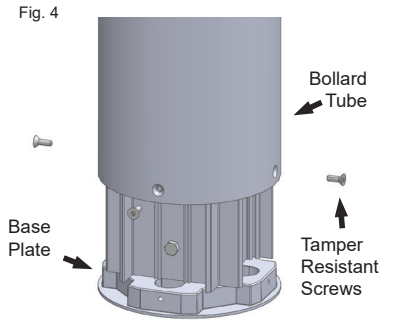


3. Remove Dome Assembly from bollard tube by removing (4) tamper resistant screws.



4. High Abuse option (HA) proceed to step 4a. for all other option, skip step 4 and 7.

- 4a. Remove Bollard Tube from the Base Plate by removing (4) tamper resistant screws. (Fig. 4)
5. Remove Center Column from Base Plate by removing (4) screws. (Fig. 5)
6. Secure and level Base Plate to anchor bolt template, installing washer, lock nut and nut.
7. Reinstall Center Column to Base Plate, then align Bollard Tube (Fig. 6) to Center Column retightening (4) screws.
8. Run electrical wires 3ft. minimum through center column before attaching to base.
9. Make electrical connections. Cap all unused leads to prevent shorting. This fixture auto adjusts for voltages between 120 – 277VAC. (See Detail A)
 - a. Connect the line fixture lead to the black supply lead.
 - b. Connect the common fixture lead to the white supply lead.
 - c. Connect the ground lead from the service to the green grounding lead.



10. Install Dome Assembly to Bollard Tube, retightening (4) tamper resistant screws. (Fig. 3)

TROUBLE SHOOTING

ELB-HA does not turn “ON”.

1. Check incoming voltage to LED driver. Must be at least a minimum of 120VAC and no greater than 277VAC.
2. Are all the LEDs on the light engine “OFF”? If so, LED driver may be defective. Using a voltmeter, check to see if voltage is present at the output of power supply. If low or no voltage, then replace power supply.
3. If any individual LEDs are “OFF” the LED light engine is defective. Please have the serial number off the light engine available when you contact technical support.