

LED DOWNLIGHTS

BARRON **TRACE LITE**[®]
commercial & industrial lighting



Featuring sleek designs combined with LED efficiency. Designed to seamlessly fit into most environments, these versatile solutions are available for both retrofit and new construction projects. Trace-lite downlights are available in both recessed and surface mount configurations and select models include the added convenience of field-switchable color and power selection, making them an adaptable and efficient lighting choice for any space.

RECESSED DOWNLIGHTS



CDR4 SERIES

4" Architectural LED Downlight, CCT & Power Switchable



- Field-Switchable power between 6W, 9W & 12W (500 to 1,000 lumens)
- Field-Switchable color temp between 2700K, 3000K, 3500K, 4000K & 5000K CCT
- Available with round white or specular baffle with white finish
- 0-10V Dimming
- cETLus Listed for Wet Locations, IC Rated, Title 24 JA8 compliant, Energy Star certified
- Ideal for both retrofit and new construction applications



CDR6 SERIES

6" Architectural LED Downlight, CCT & Power Switchable



- Field-Switchable power between 10W, 15W & 20W (900 to 2,000 lumens)
- Field-Switchable color temp between 2700K, 3000K, 3500K, 4000K & 5000K CCT
- Available with round white or specular baffle with white finish
- 0-10V Dimming
- cETLus Listed for Wet Locations, IC Rated, Title 24 JA8 compliant, Energy Star certified
- Ideal for both retrofit and new construction applications



CDR8 SERIES

8" Architectural LED Downlight, CCT & Power Switchable



- Field-Switchable power between 30W, 40W & 50W (3,000 to 5,000 lumens)
- Field-Switchable color temp between 2700K, 3000K, 3500K, 4000K & 5000K CCT
- Available with white baffle with white finish
- 0-10V Dimming
- cETLus Listed for Wet Locations, IC Rated, Title 24 JA8 compliant, Energy Star certified
- Ideal for both retrofit and new construction applications



MODR4 SERIES

4" Recessed LED Retrofit Downlight, Power Switchable



- 10W, Produces up to 700 lumens
- Field-Switchable color temp between 2700K, 3000K, 3500K, 4000K & 5000K CCT
- Triac Dimming
- cETLus Listed for Damp Locations, IC Rated, Title 24 JA8 compliant, Energy Star certified
- Ideal for both retrofit and new construction applications
- Easy clip-in installation to 4" can housing with no additional accessories, compatible with BL4ICLED Series housings
- E26 Medium screw-base Edison connector provides easy retrofit of incandescent housings

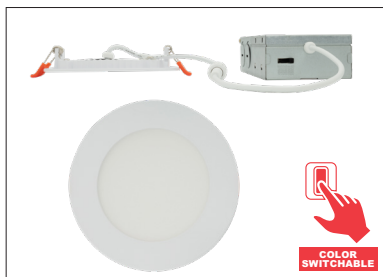


MODR6 SERIES

6" Recessed LED Retrofit Downlight, Power Switchable



- 14W, Produces up to 1,000 lumens
- Field-Switchable color temp between 2700K, 3000K, 3500K, 4000K & 5000K CCT
- Triac Dimming
- cETLus Listed for Damp Locations, IC Rated, Title 24 JA8 compliant, Energy Star certified
- Easy clip-in installation to 5"/6" can housing with no additional accessories, compatible with BL9ICLED Series housings
- E26 Medium screw-base Edison connector provides easy retrofit of incandescent housings



FPR4 SERIES

4" Ultra-Thin Recessed LED Downlight, Power Switchable



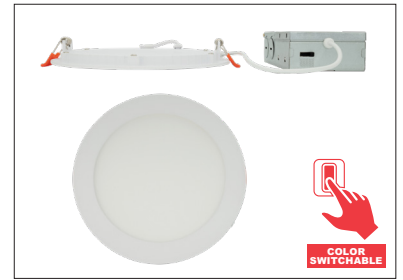
- 7W, Produces up to 600 lumens
- Field-Switchable color temp between 2700K, 3000K, 3500K, 4000K & 5000K CCT
- Triac Dimming
- Slim, canless design, lamp is only .39" thick
- cETLus Listed for Wet Locations, IC Rated, Title 24 JA8 compliant, Energy Star certified
- Ideal for both retrofit and new construction applications

FPR6 SERIES

6" Ultra-Thin Recessed LED Downlight, Power Switchable



- 15W, Produces up to 1,000 lumens
- Field-Switchable color temp between 2700K, 3000K, 3500K, 4000K & 5000K CCT
- Triac Dimming
- Slim, canless design, lamp is only .39" thick
- cETLus Listed for Wet Locations, IC Rated, Title 24 JA8 compliant, Energy Star certified
- Ideal for both retrofit and new construction applications

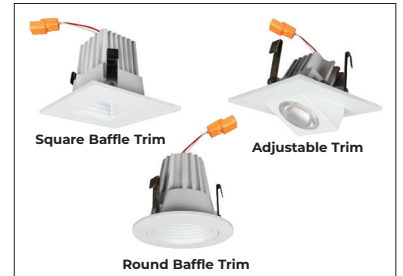


BLED-2T SERIES

2" Recessed LED Retrofit Downlight



- 9W, Produces up to 600 lumens
- 3000K, 3500K or 4000K CCT
- Available in round, square or adjustable baffle trims
- Compatible with BLED2 Series 2" recessed housings
- Dimmable with most standard incandescent and low voltage dimmers
- cULus Listed for Damp/Wet Locations, Title 24 Compliant, Energy Star certified
- Ideal for both retrofit and new construction applications



BRK-LED350 SERIES

3.5" Recessed LED Retrofit Downlight



- 9W, Produces up to 560 lumens
- 3000K CCT
- Dimmable down to 5% with most dimmers
- cULus Listed for Wet Locations, Title 24 Compliant, Energy Star certified
- E26 Medium screw-base Edison connector provides easy retrofit of incandescent housings



RECESSED DOWNLIGHT HOUSINGS

BL350 SERIES

3.5", IC Rated LED Recessed Housing, Steel



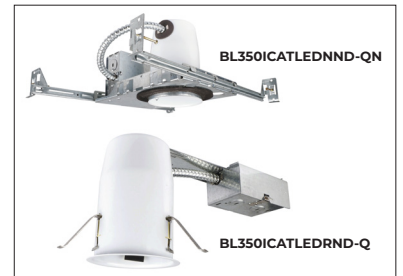
- UL Listed for Damp Location, IC Rated, Title 24 compliant

REMODEL

- Galvanized steel construction
- Four remodel clips secure housing and accommodates 1/2" and 5/8" ceiling materials
- Housing adjusts from 5/8" to 1 1/8" to accommodate various ceiling thicknesses

NEW CONSTRUCTION

- Galvanized steel construction with removable housing for easy access to the junction box
- Pre-installed nails in bar hangers easily install in regular and engineered lumber joints
- Adjustable bar hangers from 13 3/8" - 25" and can be repositioned 90° on plaster frame

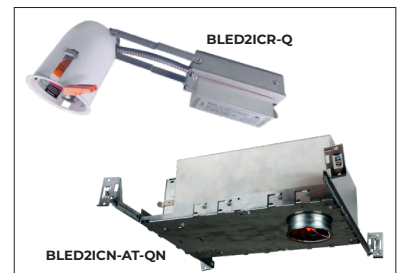


BLED2 SERIES

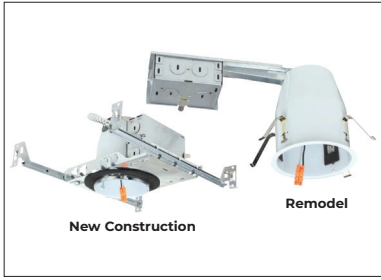
2", IC Rated, LED Recessed Housing, Steel



- New construction and retrofit models available
- Compatible with BLED-2T 2" recessed downlights
- Bar hangers on new construction models are adjustable from 13 3/8" to 25" and can be repositioned 90° on plaster frame
- Pre-installed nails in bar hangers on new construction models easily install in regular and engineered lumber joists
- cULus Listed for Damp/Wet Locations, IC Rated (BLED2ICN-AT-QN only), Title 24 compliant, Energy Star certified when used with BLED-2T



RECESSED DOWNLIGHT HOUSINGS



BL4ICLED SERIES

4", IC Rated, LED Recessed Housing, Steel



- New construction and retrofit models available
- Bar hangers on new construction models are adjustable from 13 $\frac{5}{8}$ " to 25" and can be repositioned 90° on plaster frame
- Pre-installed nails in bar hangers on new construction models easily install in regular and engineered lumber joists
- UL Listed for Damp Locations, IC Rated, Title 24 compliant, Energy Star certified



BL9ICLED SERIES

6", IC Rated, LED Recessed Housing, Steel



- New construction and retrofit models available
- Remodel housing adjusts from $\frac{5}{8}$ " to 1 $\frac{3}{8}$ " to accommodate various ceiling thicknesses
- Bar hangers on new construction models are adjustable from 13 $\frac{5}{8}$ " to 25" and can be repositioned 90° on plaster frame
- Pre-installed nails in bar hangers on new construction models easily install in regular and engineered lumber joists
- UL Listed for Damp Locations, IC Rated, Title 24 compliant, Energy Star certified

SURFACE MOUNT DOWNLIGHTS



DDX Gen 1 SERIES

7", Surface Mount Domed Downlight



- 12W, Produces up to 960 lumens
- Field-Switchable color temp between 2700K, 3000K, 3500K, 4000K & 5000K CCT
- Durable white thermoplastic construction
- Includes friction clips and E26 medium screw-base Edison connector for installation in 4" to 6" recessed cans
- Triac/ELV Dimming
- cULus Listed for Damp Locations, Title 24 JA8 compliant, Energy Star certified



FJX SERIES

120VAC LED Surface Mount Downlight



- Ultra-slim surface mount downlight, only $\frac{1}{2}$ " thick
- 120VAC Input
- Available in 5", 7", 9" and 12" diameters
- 6W to 24W, from 400 to 2,000 lumens
- 3000K CCT (5", 7", 9" and 12" models)
- Field-Switchable color temp between 3000K, 4000K & 5000K CCT (7" & 9" models only)
- Triac dimming
- Installs directly to 4" recessed J-box
- cETLus Listed for Damp Locations, Energy Star certified



FJX-VS SERIES

12-2770VAC LED Surface Mount Downlight



- Ultra-slim surface mount downlight, only $\frac{1}{2}$ " thick
- 120-277VAC Input
- Available in 7" and 9" diameters
- 12W or 18W, from 890 to 1,340 lumens
- 3500K or 4000K CCT
- Triac dimming
- Installs directly to 4" recessed J-box
- cETLus Listed for Damp Locations, Title 24 compliant, Energy Star certified